

Kissimmee Shopping Center

Retail Space for Lease



2636 N. Orange Blossom Trail
Kissimmee, FL 34744

Property Details:

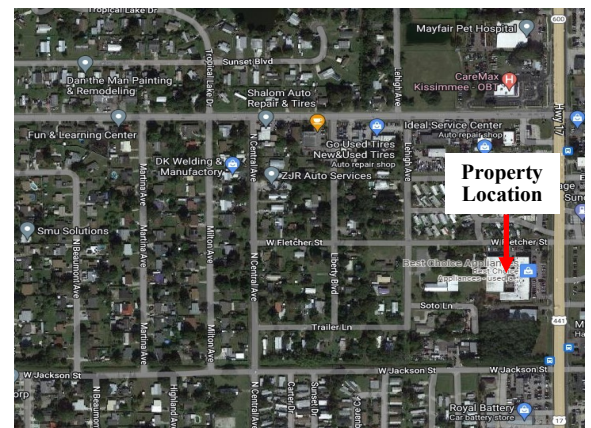
Total Space Available	1,800 RSF
Min Divisible	1,800 RSF
Max Contiguous	1,800 RSF
Rental Rate	TBD
Property Type	Retail/Warehouse
Building Size	30,350 SF
Lease Type	NNN
Zoned	CG (Commercial General)

Spaces:

Suite	Space Available	Min Divisible	Max Contiguous	Price	Date Available	Description
2636	1,800 SF	1,800 SF	1,800 SF	\$18.00 PSF	September 1, 2023	Retail

Location Description:

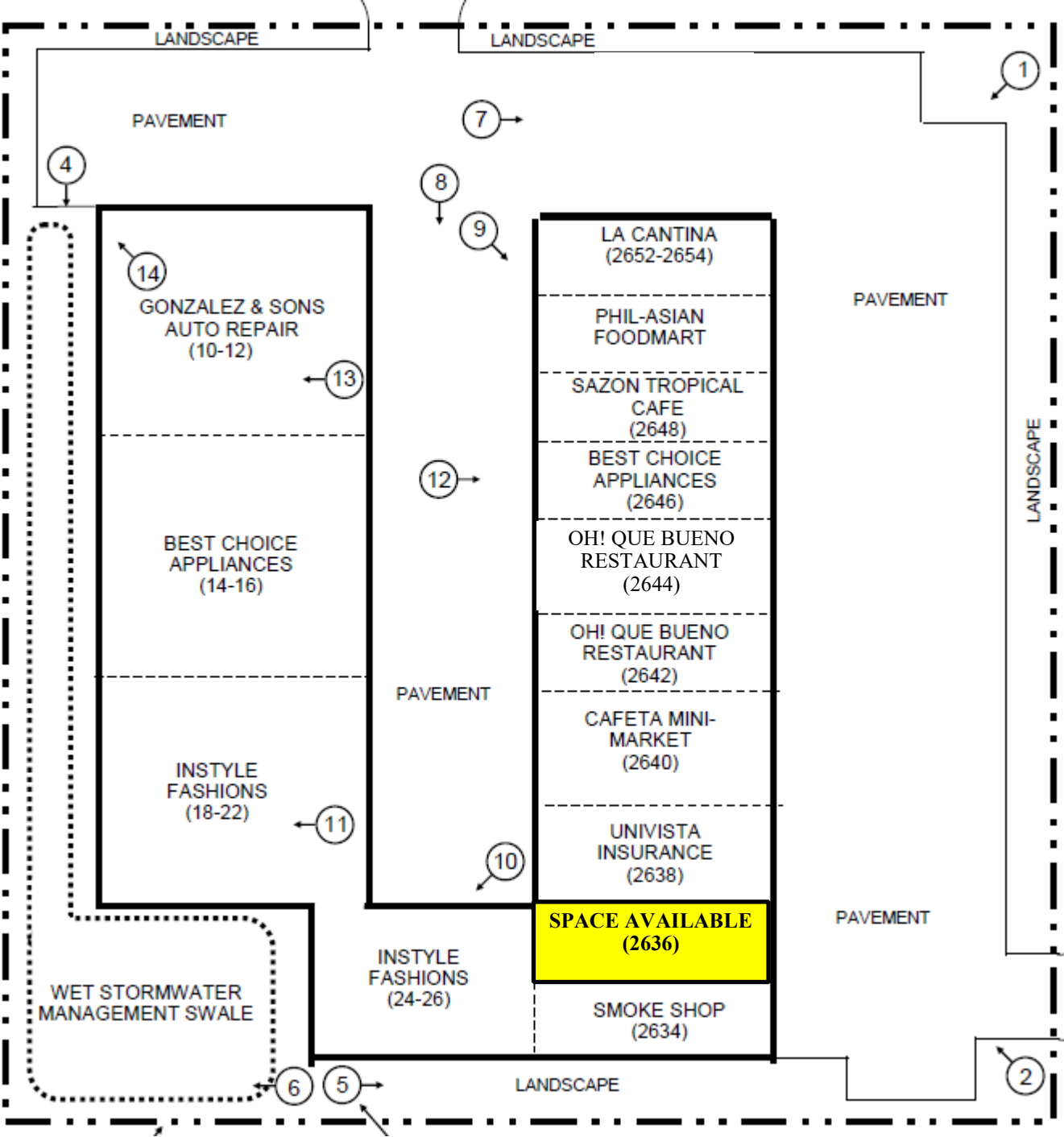
- Road frontage on N. Orange Blossom Trail in Kissimmee
- Within 10-15 miles from major Orlando area theme parks
- Close to Downtown located at Kissimmee Main Street and Old Town Kissimmee
- 15 miles from Orlando International Airport
- Retail spaces in the front and warehouses in the back



Commercial Sales & Leasing | Property Management | Project Development | Acquisitions & Dispositions | Construction Services

Southeastern Realty Group, Inc. 933 Lee Road Suite 400—Orlando, FL 32810—t: 407-629-5595—f: 407-645-2035
www.southeasternrealty.com

Site Plan:



Unit 2636 - 1,800 RSF

Southeastern Realty Group
933 Lee Road, Suite 400, Orlando, Florida 32810
407-629-5595 phone, 407-645-2035 fax
www.southeasternrealty.com

The information contained herein is from sources deemed reliable, but no warranty or representation is made as to the accuracy thereof and no liability may be imposed.