

Brick Court Property

Office / Medical Space Available

6001 Brick Ct



6001 Brick Court,
Winter Park, Florida 32792

Property Details:

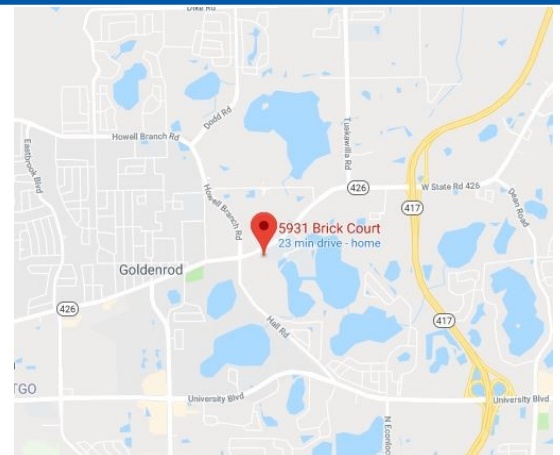
| | |
|-----------------------|-----------------------|
| Total Space Available | 2,700 RSF |
| Rental Rate | TBD |
| Min. Divisible | 2,700 RSF |
| Max. Contiguous | 2,700 RSF |
| Property Type | Office/Medical/Dental |
| Property Sub-type | Office Building |
| Zoned | PD |

Spaces:

| Bldg./ Suite | Space Available | Price | Date Available | Description |
|--------------|-----------------|-------|-----------------|---------------------------------|
| 6001 / 101 | 2,700 RSF | TBD | January 1, 2023 | Office / Medical / Dental Space |

Location Description:

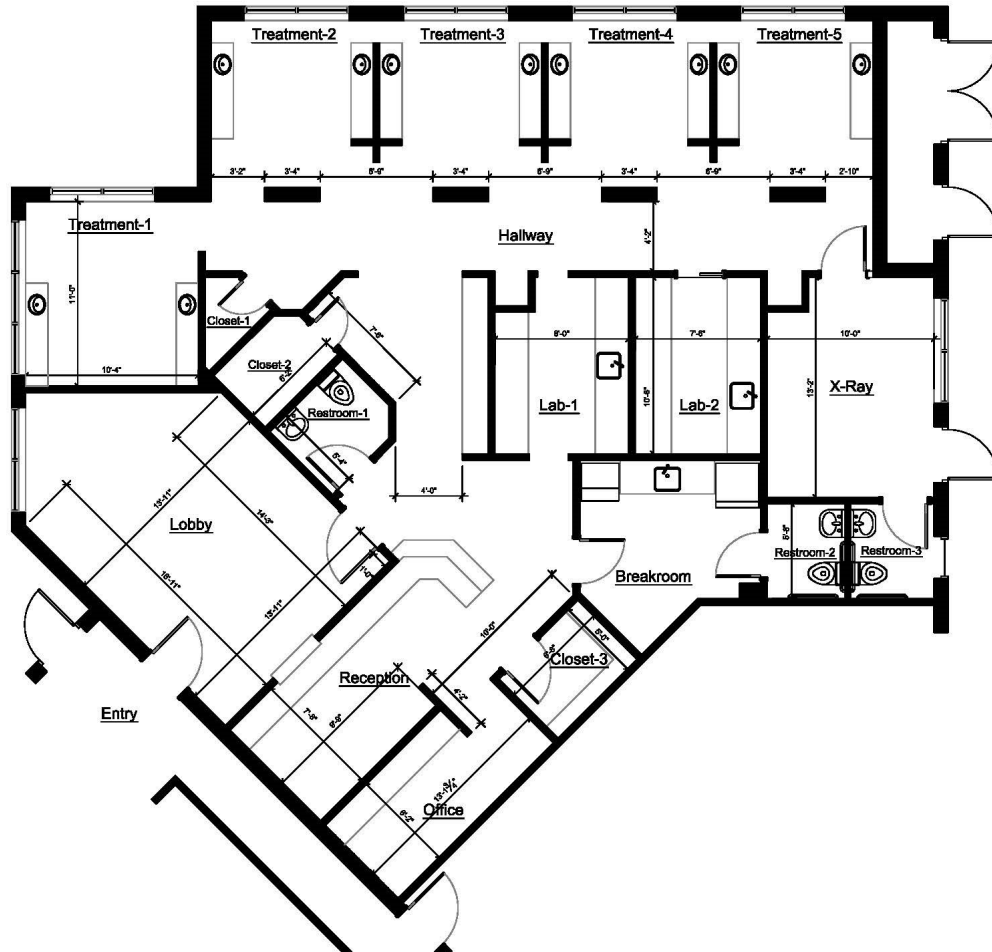
- Winter Park Address
- Excellent parking
- Located just off Aloma Avenue in quiet office park
- Existing dental office



Commercial Sales & Leasing | Property Management | Project Development | Acquisitions & Dispositions | Construction Services

Southeastern Realty Group, Inc. - 933 Lee Road Suite 400 - Orlando, FL 32810 - t: 407-629-5595 - f: 407-645-2035

**6001 Brick Court, Suite 101
Winter Park, FL 32792
2,700 RSF**



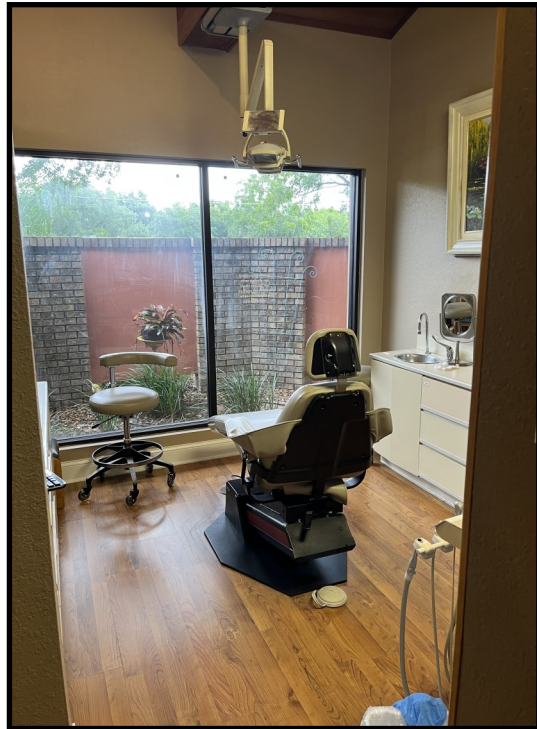
6001 Brick Court, Suite 101, Winter Park, FL 32792
SCALE: 1/8" = 1'-0"

2,700 RSF

Southeastern Realty Group
933 Lee Road, Suite 400, Orlando, Florida 32810
407-629-5595 phone, 407-645-2035 fax
Visit our website at www.southeasternrealty.com

The information contained herein is from sources deemed reliable, but no warranty or representation is made as to the accuracy thereof and no liability may be imposed.

**6001 Brick Court, Suite 101
Winter Park, FL 32792
2,700 RSF**



**Southeastern Realty Group
933 Lee Road, Suite 400, Orlando, Florida 32810
407-629-5595 phone, 407-645-2035 fax
Visit our website at www.southeasternrealty.com**

The information contained herein is from sources deemed reliable, but no warranty or representation is made as to the accuracy thereof and no liability may be imposed.