

Brick Court Property Office / Medical Space Available



**6001 Brick Court,
Winter Park, Florida 32792**

Property Details:

Total Space Available	2,700 RSF
Rental Rate	TBD
Min. Divisible	2,700 RSF
Max. Contiguous	2,700 RSF
Property Type	Office/Medical/Dental
Property Sub-type	Office Building
Zoned	PD

Spaces:

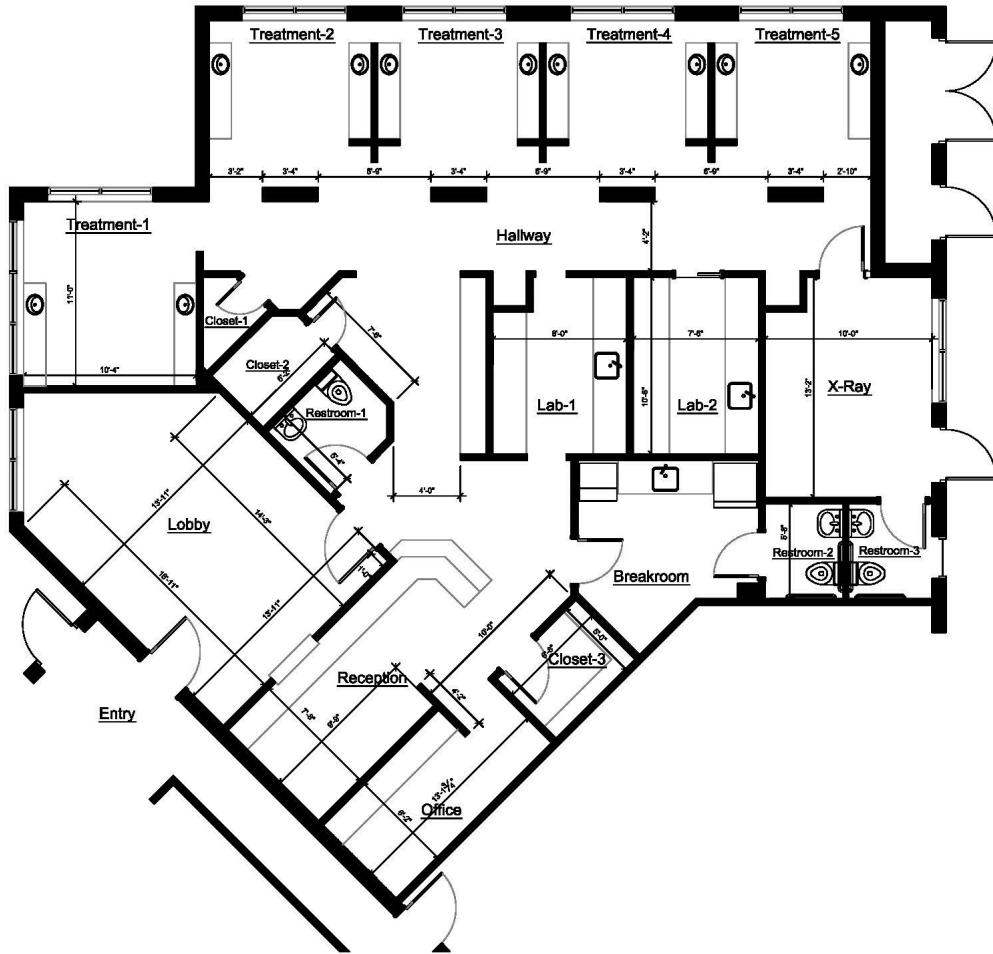
Bldg./ Suite	Space Available	Price	Date Available	Description
6001 / 101	2,700 RSF	TBD	July 1, 2023	Office / Medical / Dental Space

Location Description:

- Winter Park Address
- Excellent parking
- Located just off Aloma Avenue in quiet office park
- Existing dental office



6001 Brick Court, Suite 101
Winter Park, FL 32792
2,700 RSF



6001 Brick Court, Suite 101, Winter Park, FL 32792
SCALE: 1/8" = 1'-0"

2,700 RSF

Southeastern Realty Group
933 Lee Road, Suite 400, Orlando, Florida 32810
407-629-5595 phone, 407-645-2035 fax
Visit our website at www.southeasternrealty.com

The information contained herein is from sources deemed reliable, but no warranty or representation is made as to the accuracy thereof and no liability may be imposed.

**6001 Brick Court, Suite 101
Winter Park, FL 32792
2,700 RSF**



Southeastern Realty Group
933 Lee Road, Suite 400, Orlando, Florida 32810
407-629-5595 phone, 407-645-2035 fax
Visit our website at www.southeasternrealty.com

The information contained herein is from sources deemed reliable, but no warranty or representation is made as to the accuracy thereof and no liability may be imposed.