

Brick Court Property

Office Space Available



5971 Brick Court,
Winter Park, Florida 32792

Property Details:

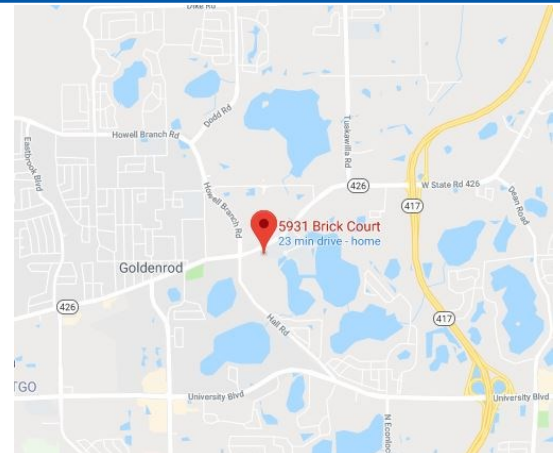
| | |
|-----------------------|-----------------|
| Total Space Available | 2,589 RSF |
| Rental Rate | TBD |
| Min. Divisible | 2,589 RSF |
| Max. Contiguous | 2,589 RSF |
| Property Type | Office |
| Property Sub-type | Office Building |
| Zoned | PD |

Spaces:

| Bldg./ Suite | Space Available | Price | Lease Type | Date Available | Description |
|-------------------|-----------------|-------|---|----------------|----------------|
| 5971 / Suite 2111 | 2,589 RSF | TBD | Mod. Gross - Electric & Water Included. | Now | See Floor Plan |

Location Description:

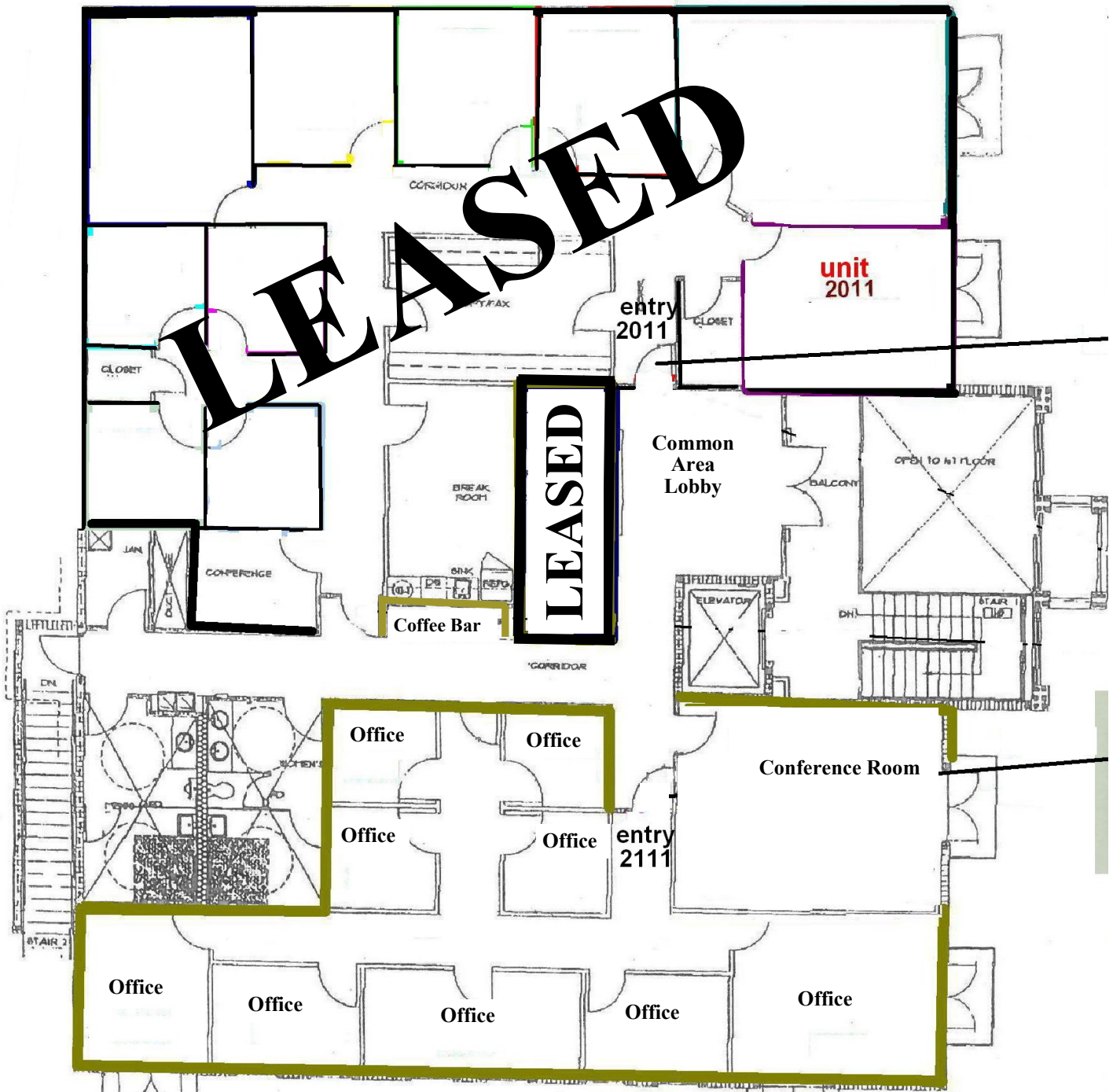
- Class A Space
- Winter Park Address
- Excellent parking
- Located just off Aloma Avenue in quiet office park
- Elevator access available in building



Commercial Sales & Leasing | Property Management | Project Development | Acquisitions & Dispositions | Construction Services

Southeastern Realty Group, Inc. - 933 Lee Road Suite 400 - Orlando, FL 32810 - t: 407-629-5595 - f: 407-645-2035

5971 Brick Court, Suite 2111
Winter Park, FL 32792



SECOND FLOOR

2,589 RSF

Southeastern Realty Group
933 Lee Road, Suite 400, Orlando, Florida 32810
407-629-5595 phone, 407-645-2035 fax
Visit our website at www.southeasternrealty.com

The information contained herein is from sources deemed reliable, but no warranty or representation is made as to the accuracy thereof and no liability may be imposed.