

Palm Bay Town Center Office/ Retail Space for Lease

4430 Dixie Highway
Palm Bay, Florida



Space Available	Square Footage	Price	Date Available
Unit 5	1,500 SF	TBD	Now

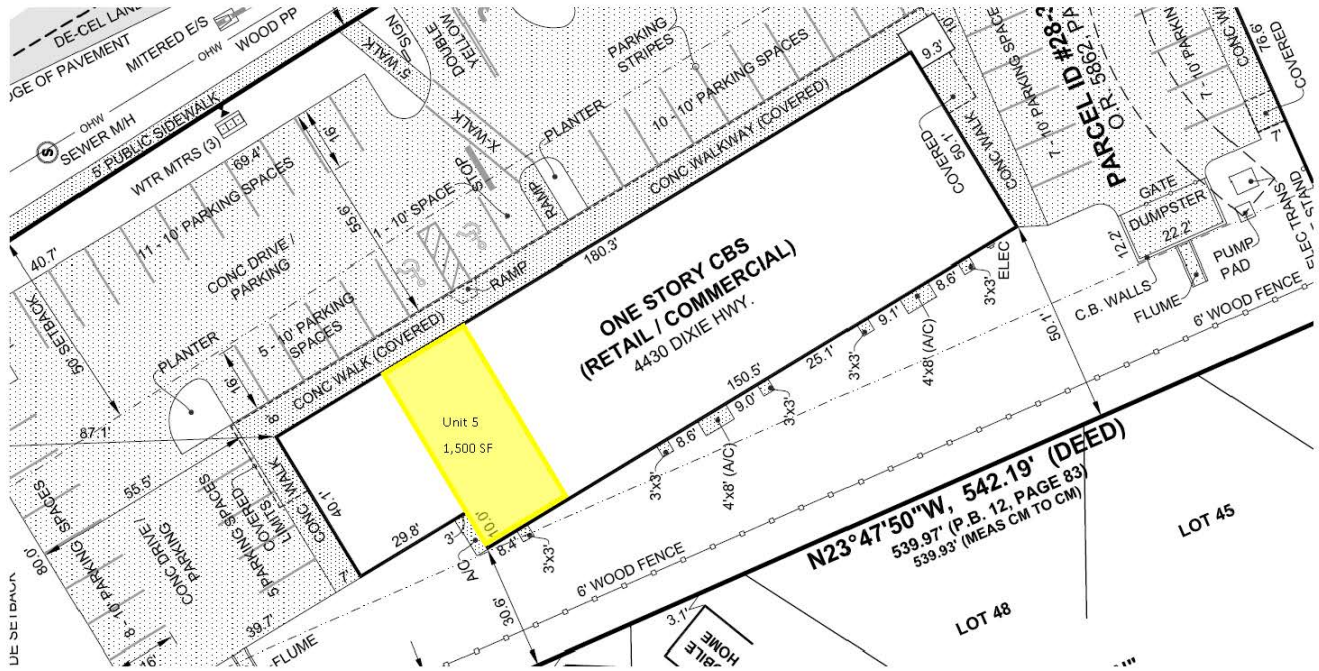
Features:

- Highway US-1 Frontage
- Ample parking with direct access
- Inner coastal views
- Modern Key West design
- Walking distance to restaurants



Commercial Sales & Leasing | Property Management | Project Development | Acquisitions & Dispositions | Construction Services
Southeastern Realty Group, Inc. - 933 Lee Road Suite 400 - Orlando, FL 32810 - t: 407-629-5595 - f: 407-645-2035

Unit 5



Commercial Sales & Leasing | Property Management | Project Development | Acquisitions & Dispositions | Construction Services
Southeastern Realty Group, Inc. - 933 Lee Road Suite 400 - Orlando, FL 32810 - t: 407-629-5595 - f: 407-645-2035

The information contained herein is from sources deemed reliable, but no warranty or representation is made as to the accuracy thereof and no liability may be imposed.