

## Palm Plaza

## Retail/Office Space for Lease



2244 E. Irlo Bronson Memorial Hwy  
Kissimmee, Florida 34744

### Property Details:

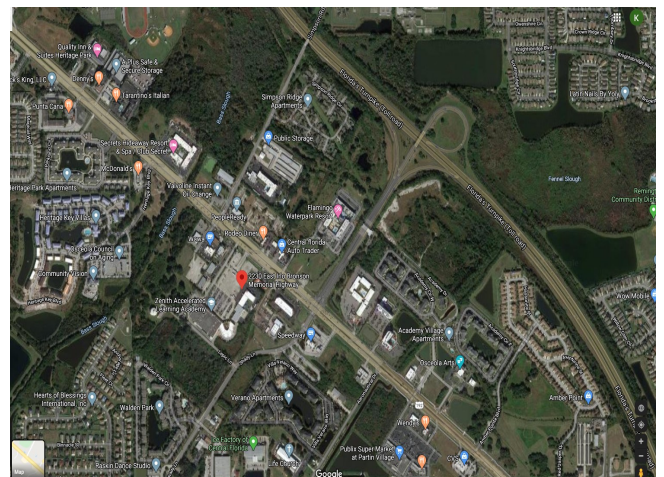
Total Space Available	1,193 RSF
Rental Rate	TBD
Min. Divisible	1,193 RSF
Max. Contiguous	1,193 RSF
Property Type	Retail Strip Center
Zoning	PD (Planned Development)

### Spaces:

Suite	Space Available	Price	Date Available	Description
2244 - K	1,193 RSF	TBD	4/15/2022	Former pharmacy space

### Location Description:

- Located at the Florida Turnpike Exit 244 and Hwy 192 in the high growth area of Kissimmee
- High Density residential subdivisions within 5-mile radius
- Population 5-mile radius: 127,905
- Average Household Income: \$55,658
- Traffic Count: 58,000 cars per day
- Permitted uses include retail, office, restaurant, medical office and many more

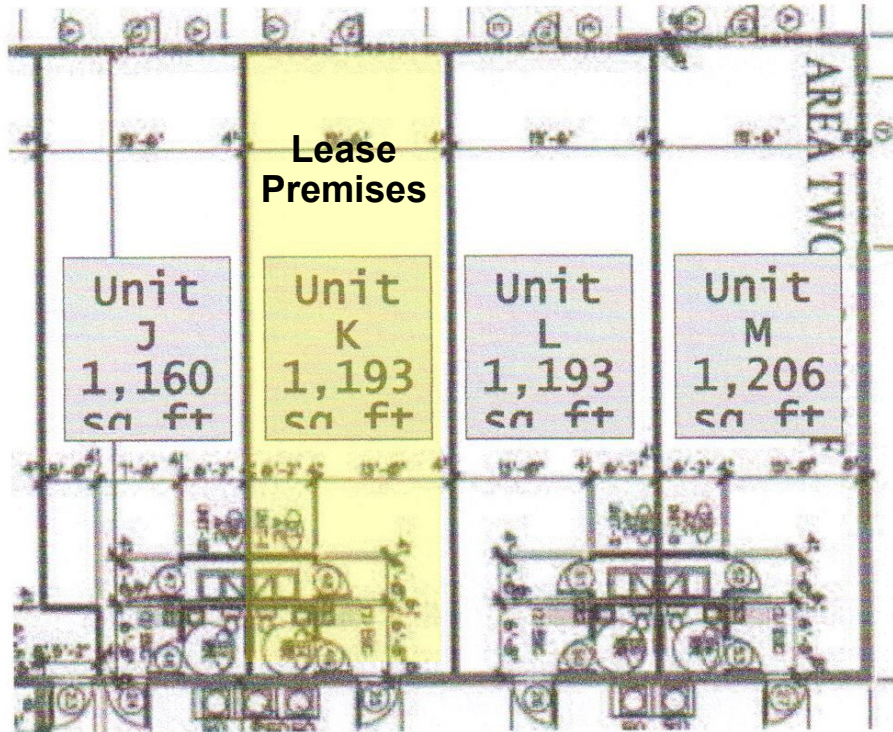


Commercial Sales & Leasing | Property Management | Project Development | Acquisitions & Dispositions | Construction Services

Southeastern Realty Group, Inc. - 933 Lee Road Suite 400 - Orlando, FL 32810 - t: 407-629-5595 - f: 407-645-2035

The information contained herein is from sources deemed reliable, but no warranty or representation is made as to the accuracy thereof and no liability may be imposed.

# Suite 2244-K - Floorplan:



2244 E. Irlo Bronson Memorial Hwy.  
Suite K  
Kissimmee, FL 34744

1,193 RSF

Commercial Sales & Leasing | Property Management | Project Development | Acquisitions & Dispositions | Construction Services  
Southeastern Realty Group, Inc. - 933 Lee Road Suite 400 - Orlando, FL 32810 - t: 407-629-5595 - f: 407-645-2035

The information contained herein is from sources deemed reliable, but no warranty or representation is made as to the accuracy thereof and no liability may be imposed.