

Kissimmee Multi Specialty Clinic Building

Office Space for Lease



201 Hilda Street
Kissimmee, FL 34741

Property Details:

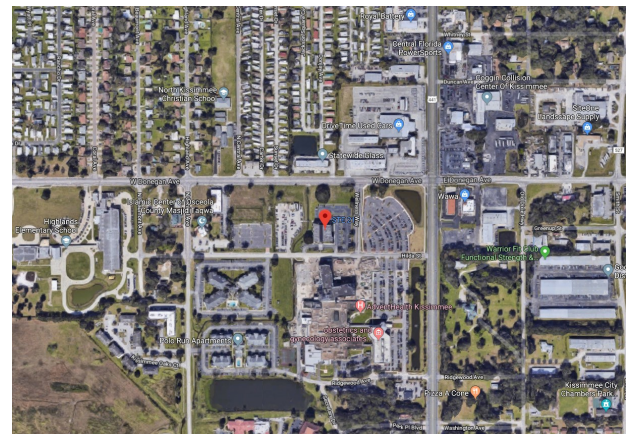
Total Space Available	1,396 RSF
Rental Rate	TBD
Min. Divisible	1,396 RSF
Max. Contiguous	1,396 RSF
Property Type	Office
Property Sub Type	Medical Office

Spaces:

Suite	Space Available	Min Divisible	Max Contiguous	Price	Date Available
22	1,396 RSF	1,396 RSF	1,396 RSF	TBD	30 Days

Features:

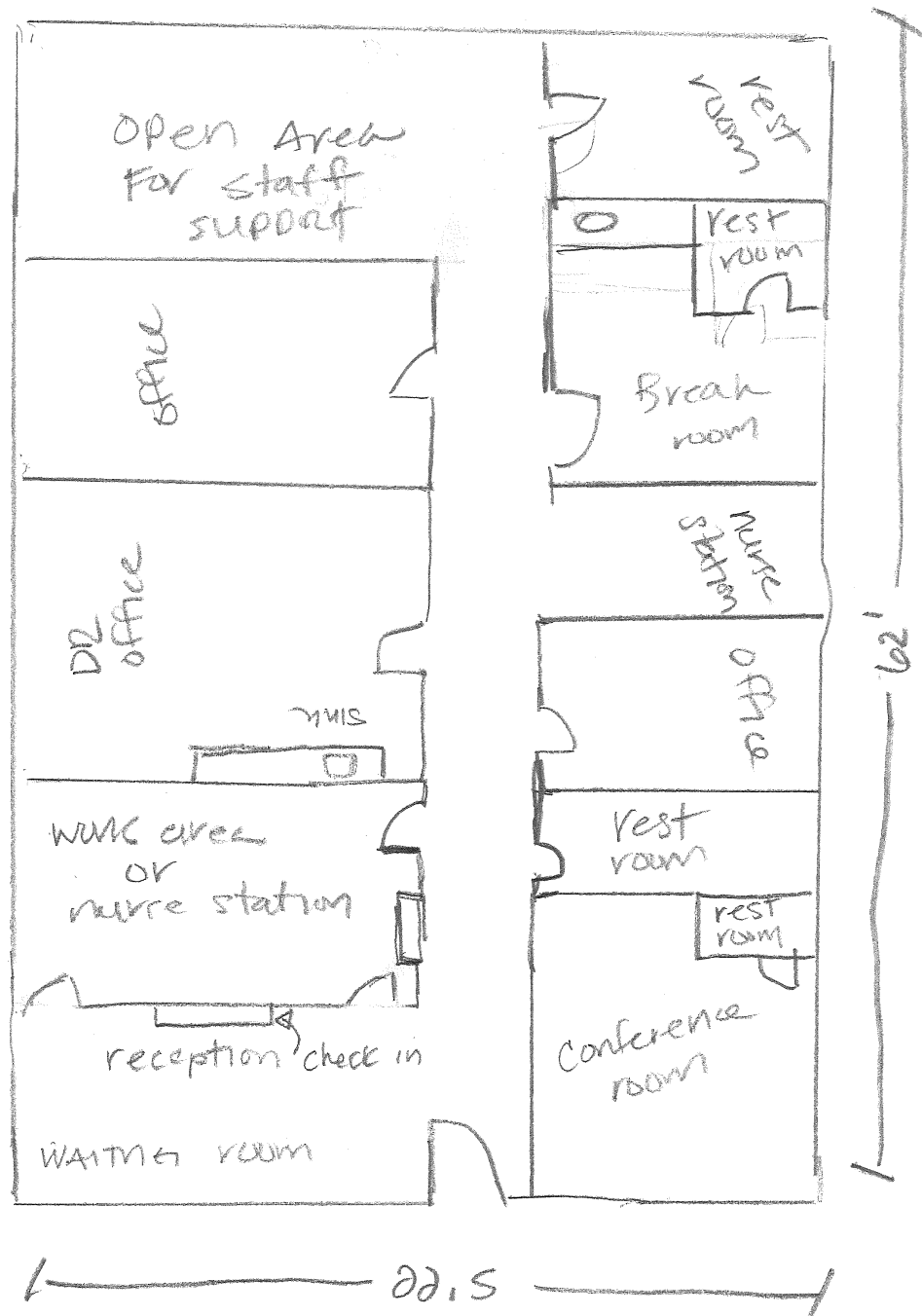
- Space layout as a doctor's office
- Medical office complex adjacent to AdventHealth Kissimmee Hospital campus off of Orange Blossom Trail
- Minutes from Osceola Parkway, Hunters Creek and the Florida Turnpike
- Plenty of convenient parking



Commercial Sales & Leasing | Property Management | Project Development | Acquisitions & Dispositions | Construction Services

Southeastern Realty Group, Inc. - 933 Lee Road Suite 400 - Orlando, FL 32810 - t: 407-629-5595 - f: 407-645-2035

Floor Plan:



FOR ILLUSTRATION PURPOSES ONLY. ALL DIMENSIONS ARE APPROXIMATE.

201 Hilda Street, Suite 22
Kissimmee, FL 34741
1,396 RSF

Commercial Sales & Leasing | Property Management | Project Development | Acquisitions & Dispositions | Construction Services
Southeastern Realty Group, Inc. - 933 Lee Road Suite 400 - Orlando, FL 32810 - t: 407-629-5595 - f: 407-645-2035

The information contained herein is from sources deemed reliable, but no warranty or representation is made as to the accuracy thereof and no liability may be imposed.

Site Overview:



201 Hilda Street
Kissimmee, FL 34741

Commercial Sales & Leasing | Property Management | Project Development | Acquisitions & Dispositions | Construction Services
Southeastern Realty Group, Inc. - 933 Lee Road Suite 400 - Orlando, FL 32810 - t: 407-629-5595 - f: 407-645-2035

The information contained herein is from sources deemed reliable, but no warranty or representation is made as to the accuracy thereof and no liability may be imposed.