

# Victoria Square

Retail/Office Space Available



1720 & 1780 S. Woodland Blvd.,  
DeLand, FL 32720

## Property Details:

Total Space Available	4,880 SF
Rental Rate	TBD
Min. Divisible	1,880 SF
Max. Contiguous	3,000 SF
Property Type	Retail
Year Built	1990
Traffic Count	68,651 AADT
Zoning Description	PD (Planned Development)

## Spaces:

Suite	Space Available	Min Divisible	Max Contiguous	Price	Date Available	Description
1720	3,000 SF	3,000 SF	3,000 SF	Call for Pricing	30 Days	Retail/Office
1780	1,880 SF	1,880 SF	1,880 SF	Call for Pricing	30 Days	Retail/Office

## Location Description:

- Traffic Count of 68,651 AADT (Corner of Taylor Rd. & South Woodland Blvd.)
- Nearby Tenants include Wawa, Gator's Dockside Restaurant, UPS Store, Pinch A Penny, Dollar Tree, & Future Home to State of the Art 18,000 SF Pickleball Wellness Center
- 2023 estimated average household income: \$83,678
- 2023 estimated population within 3 miles: 44,992
- 2023 estimated households within 3 miles: 16,784
- Estimated daytime population within 3 miles: 40,972



Commercial Sales & Leasing | Property Management | Project Development | Acquisitions & Dispositions | Construction Services

Southeastern Realty Group, Inc. - 933 Lee Road Suite 400 - Orlando, FL 32810 - t: 407-629-5595 - f: 407-645-2035

The information contained herein is from sources deemed reliable, but no warranty or representation is made as to the accuracy thereof and no liability may be imposed.

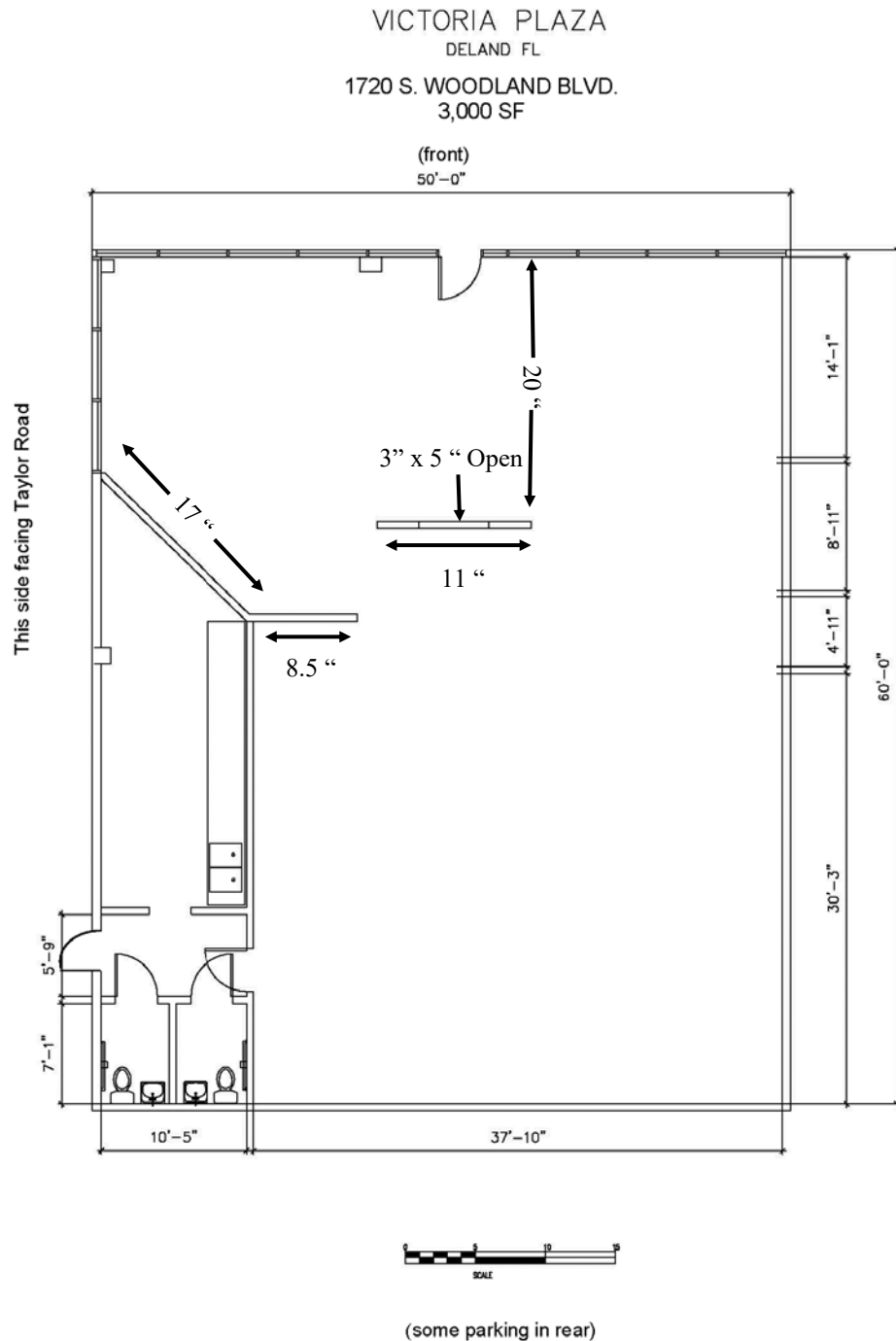
## Victoria Square - DeLand Area Retail Map:



**Southeastern Realty Group**  
933 Lee Road, Suite 400, Orlando, Florida 32810  
407-629-5595 phone, 407-645-2035 fax  
Visit our website at [www.southeasternrealty.com](http://www.southeasternrealty.com)

The information contained herein is from sources deemed reliable, but no warranty or representation is made as to the accuracy thereof and no liability may be imposed.

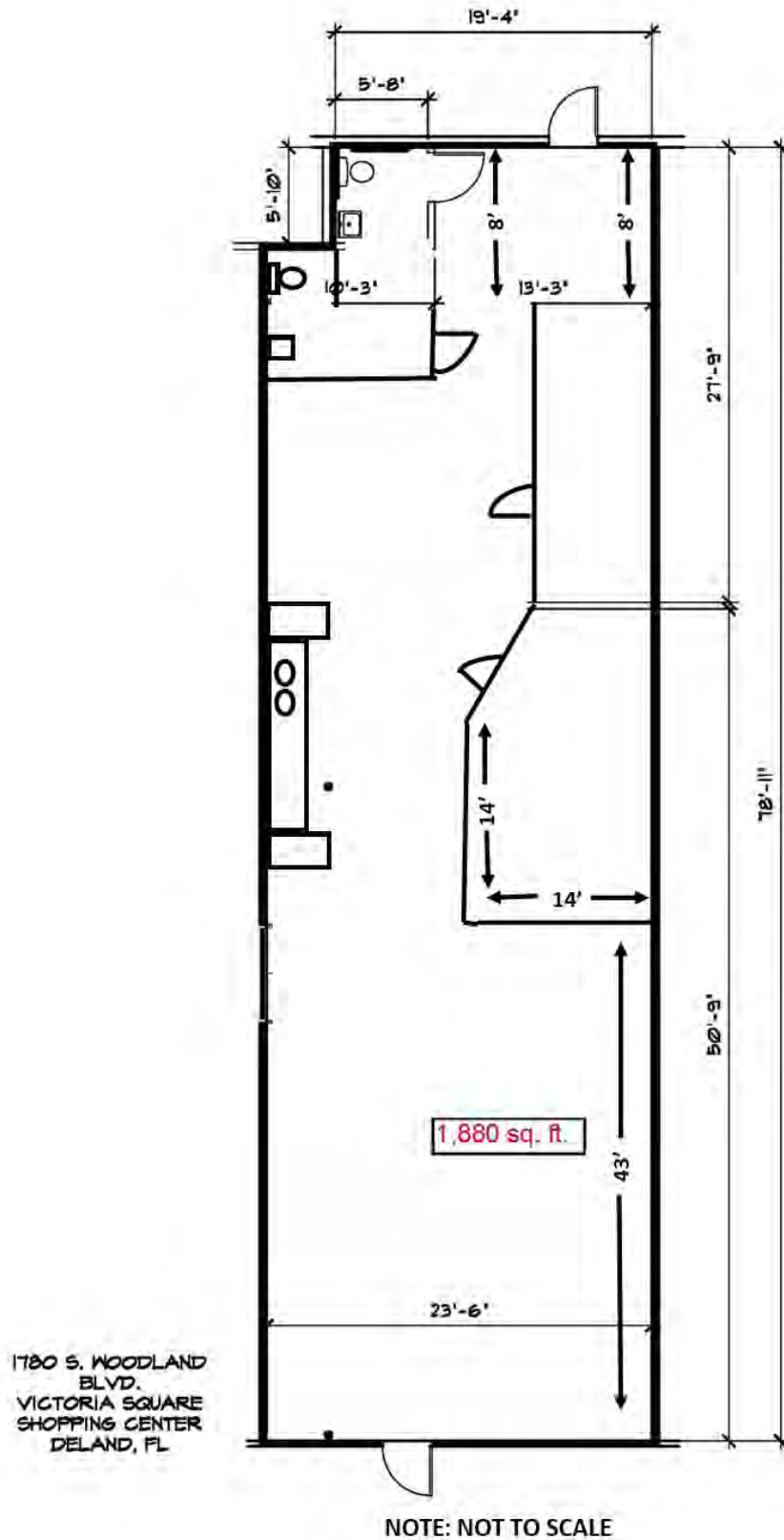
# Victoria Square - Unit 1720 Floor Plan:



Southeastern Realty Group  
933 Lee Road, Suite 400, Orlando, Florida 32810  
407-629-5595 phone, 407-645-2035 fax  
Visit our website at [www.southeasternrealty.com](http://www.southeasternrealty.com)

The information contained herein is from sources deemed reliable, but no warranty or representation is made as to the accuracy thereof and no liability may be imposed.

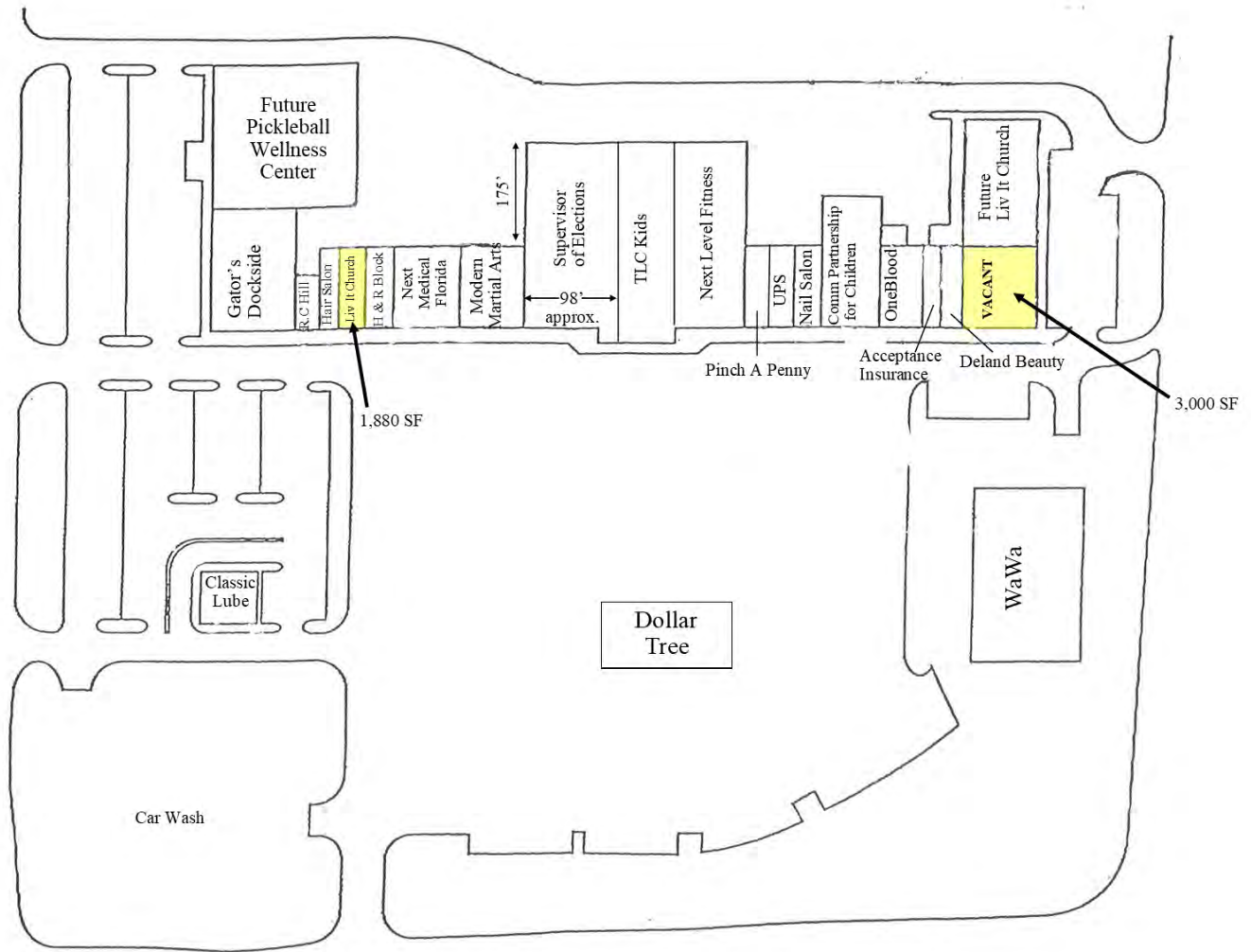
## Victoria Square - Unit 1780 Floor Plan:



Southeastern Realty Group  
933 Lee Road, Suite 400, Orlando, Florida 32810  
407-629-5595 phone, 407-645-2035 fax  
Visit our website at [www.southeasternrealty.com](http://www.southeasternrealty.com)

The information contained herein is from sources deemed reliable, but no warranty or representation is made as to the accuracy thereof and no liability may be imposed.

## Victoria Square Site Plan:



### Available Spaces:

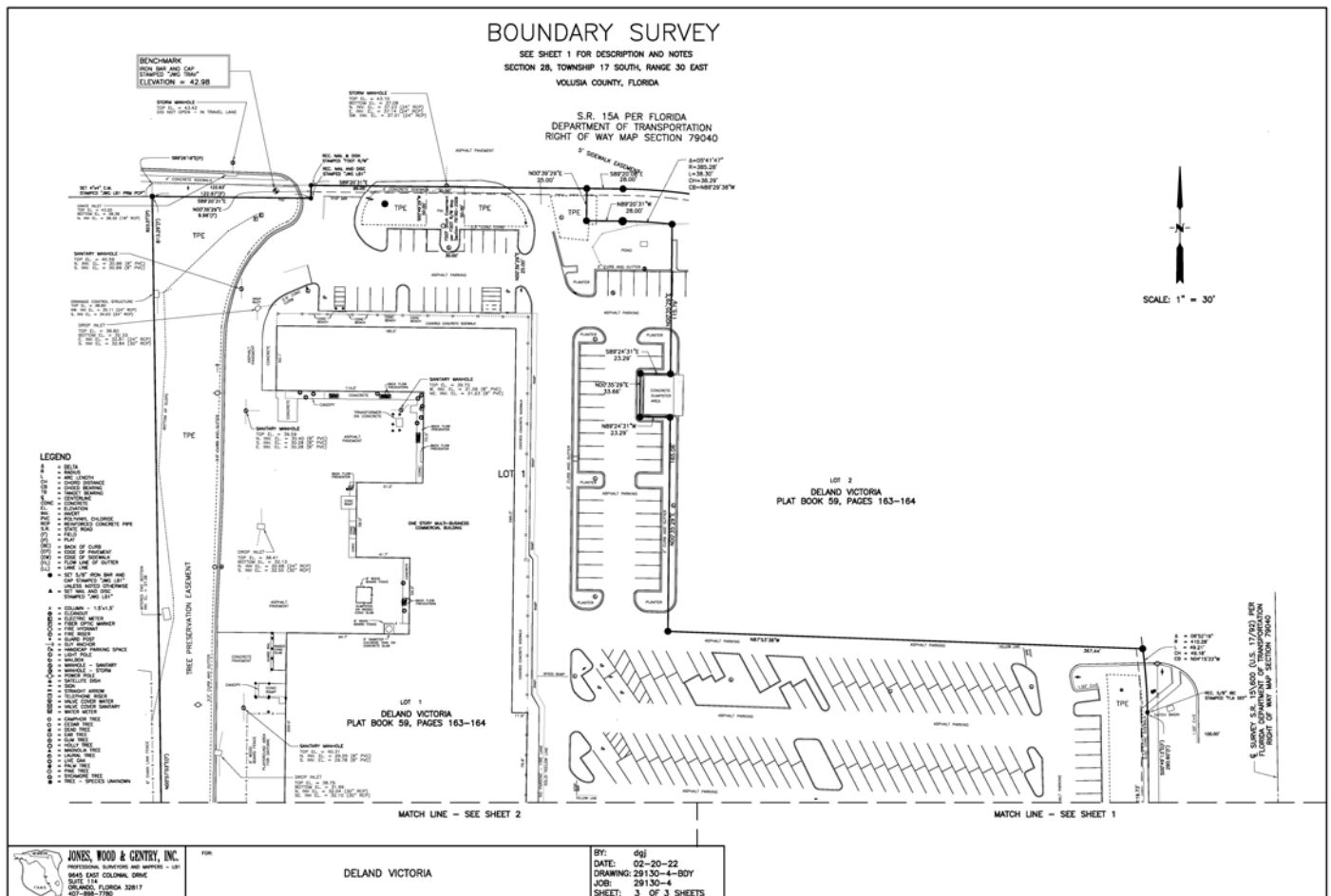
1720 S. Woodland Blvd.  
Deland, FL 32720  
3,000 SF

1780 S. Woodland Blvd.  
Deland, FL 32720  
1,880 SF

Southeastern Realty Group  
933 Lee Road, Suite 400, Orlando, Florida 32810  
407-629-5595 phone, 407-645-2035 fax  
Visit our website at [www.southeasternrealty.com](http://www.southeasternrealty.com)

The information contained herein is from sources deemed reliable, but no warranty or representation is made as to the accuracy thereof and no liability may be imposed.

## Victoria Square Survey:



### Available Spaces:

1720 S. Woodland Blvd.  
Deland, FL 32720  
3,000 SF

1780 S. Woodland Blvd.  
Deland, FL 32720  
1,880 SF

**Southeastern Realty Group**  
933 Lee Road, Suite 400, Orlando, Florida 32810  
407-629-5595 phone, 407-645-2035 fax  
Visit our website at [www.southeasternrealty.com](http://www.southeasternrealty.com)

The information contained herein is from sources deemed reliable, but no warranty or representation is made as to the accuracy thereof and no liability may be imposed.



# Victoria Square

Retail/Office Space Available



1750 S. Woodland Blvd.,  
DeLand, FL 32720

## Property Details:

Total Space Available	17,106 SF
Rental Rate	TBD
Min. Divisible	17,106 SF
Max. Contiguous	17,106 SF
Property Type	Retail
Year Built	1990
Traffic Count	68,651 AADT
Zoning Description	PD (Planned Development)

## Spaces:

Suite	Space Available	Min Divisible	Max Contiguous	Price	Date Available	Description
1750	17,106 SF	17,106 SF	17,106 SF	Call for Pricing	11/1/2025	Retail/Office

## Location Description:

- Traffic Count of 68,651 AADT (Corner of Taylor Rd. & South Woodland Blvd.)
- Nearby Tenants include Wawa, Gator's Dockside Restaurant, UPS Store, Pinch A Penny, Dollar Tree, & Future Home to State of the Art 18,000 SF Pickleball Wellness Center
- 2023 estimated average household income: \$83,678
- 2023 estimated population within 3 miles: 44,992
- 2023 estimated households within 3 miles: 16,784
- Estimated daytime population within 3 miles: 40,972



Commercial Sales & Leasing | Property Management | Project Development | Acquisitions & Dispositions | Construction Services

Southeastern Realty Group, Inc. - 933 Lee Road Suite 400 - Orlando, FL 32810 - t: 407-629-5595 - f: 407-645-2035

The information contained herein is from sources deemed reliable, but no warranty or representation is made as to the accuracy thereof and no liability may be imposed.

## Victoria Square - DeLand Area Retail Map:



Southeastern Realty Group  
933 Lee Road, Suite 400, Orlando, Florida 32810  
407-629-5595 phone, 407-645-2035 fax  
Visit our website at [www.southeasternrealty.com](http://www.southeasternrealty.com)

The information contained herein is from sources deemed reliable, but no warranty or representation is made as to the accuracy thereof and no liability may be imposed.



# Victoria Square - Unit 1750 Floor Plan:

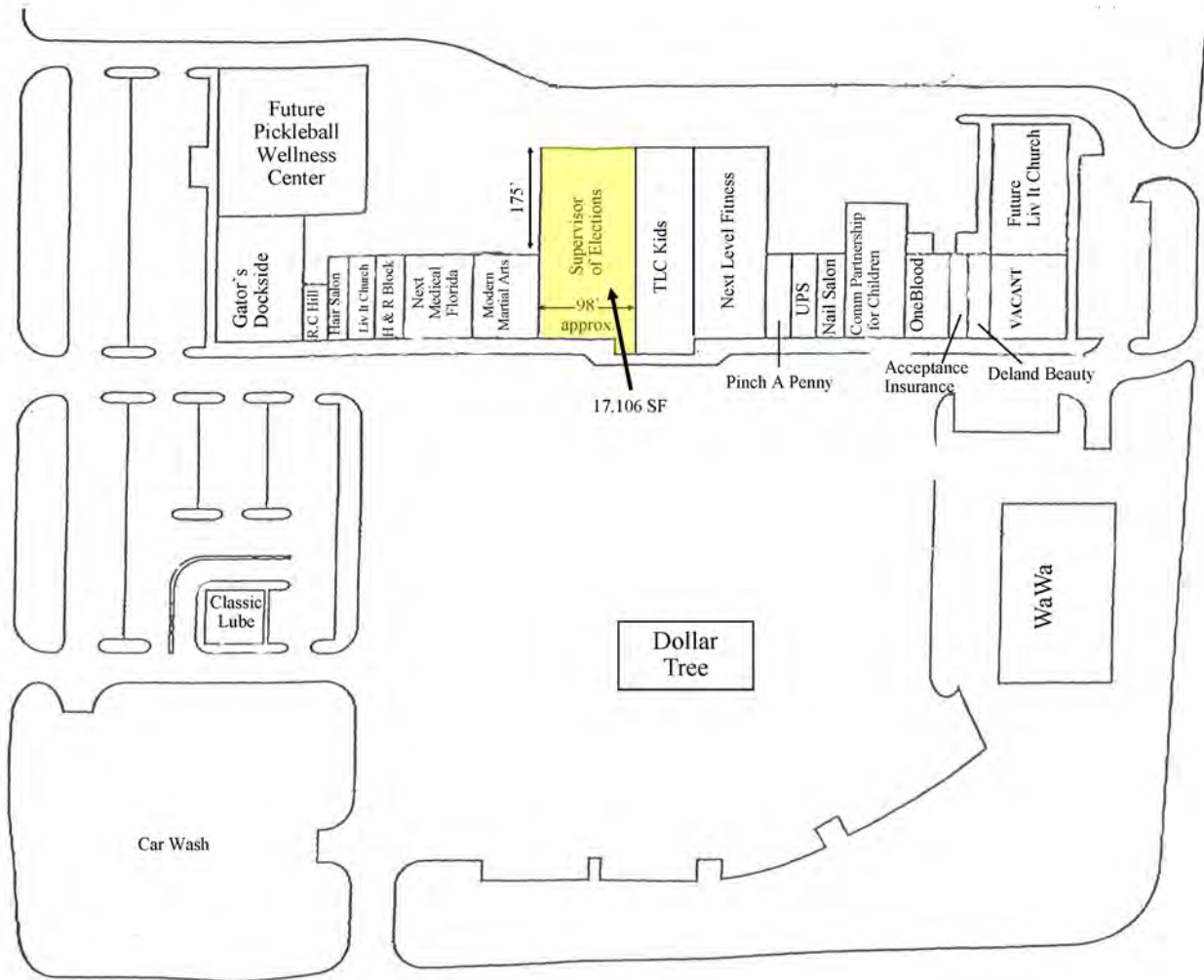


**Available Space:**  
**1750 S. Woodland Blvd.**  
**Deland, FL 32720**  
**17,106 SF**

**Southeastern Realty Group**  
 933 Lee Road, Suite 400, Orlando, Florida 32810  
 407-629-5595 phone, 407-645-2035 fax  
 Visit our website at [www.southeasternrealty.com](http://www.southeasternrealty.com)

The information contained herein is from sources deemed reliable, but no warranty or representation is made as to the accuracy thereof and no liability may be imposed.

## Victoria Square Site Plan:

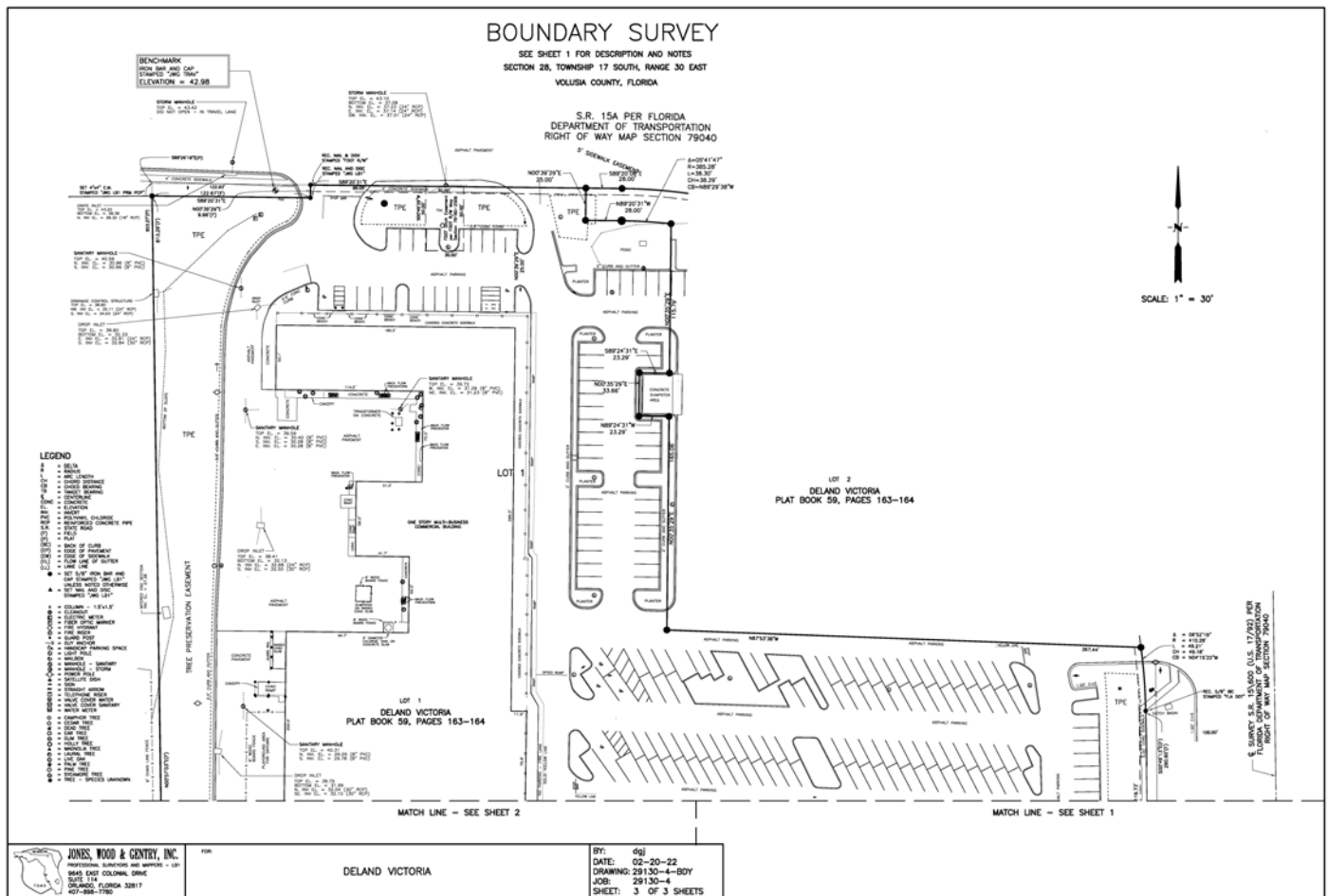


**Available Space:**  
1750 S. Woodland Blvd.  
Deland, FL 32720  
17,106 SF

Southeastern Realty Group  
933 Lee Road, Suite 400, Orlando, Florida 32810  
407-629-5595 phone, 407-645-2035 fax  
Visit our website at [www.southeasternrealty.com](http://www.southeasternrealty.com)

The information contained herein is from sources deemed reliable, but no warranty or representation is made as to the accuracy thereof and no liability may be imposed.

# Victoria Square Survey:



**Available Space:**  
1750 S. Woodland Blvd.  
Deland, FL 32720  
17,106 SF

**Southeastern Realty Group**  
933 Lee Road, Suite 400, Orlando, Florida 32810  
407-629-5595 phone, 407-645-2035 fax  
Visit our website at [www.southeasternrealty.com](http://www.southeasternrealty.com)

The information contained herein is from sources deemed reliable, but no warranty or representation is made as to the accuracy thereof and no liability may be imposed.