

# Title Center

## Office Space for Lease



2233 Lee Road,  
Winter Park, FL 32789

### Property Details:

Total Space Available	1,309 RSF
Rental Rate	Negotiable
Min. Divisible	1,309 RSF
Max. Contiguous	1,309 RSF
Property Type	Office
Building Sizes, combined	40,582 SF
Class	B
Zoning Description	O-1

### Spaces:

Suite	Space Available	Price	Lease Type	Date Available	Description
2233 - Suite 201	1,309 RSF	Negotiable	Full Service	9/1/2021	See attached floor plan

### Location Description:

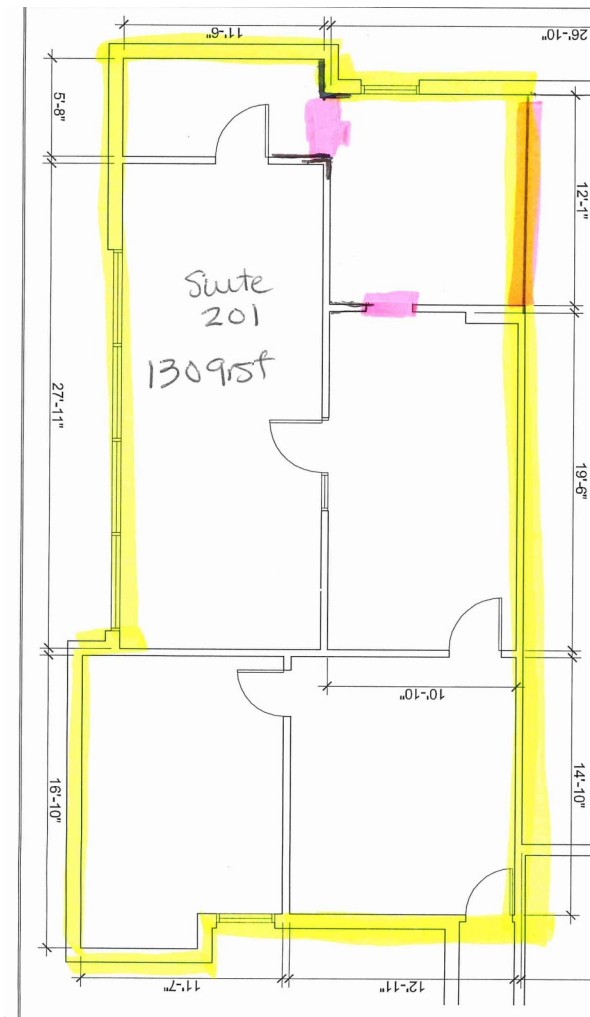
- Winter Park address/ Good Parking
- Two story, Full-Service Office building
- Convenient access to I-4 and US Hwy 17-92
- Minutes from Downtown Winter Park, Downtown Orlando, Maitland, and Altamonte Springs
- Close to new retail/ restaurants in Winter Park



Commercial Sales & Leasing | Property Management | Project Development | Acquisitions & Dispositions | Construction Services

Southeastern Realty Group, Inc. - 933 Lee Road Suite 400 - Orlando, FL 32810 - t: 407-629-5595 - f: 407-645-2035

## 2233 Floorplan - Suite 201:



1,309 RSF Available

Southeastern Realty Group  
933 Lee Road, Suite 400, Orlando, Florida 32810  
407-629-5595 phone, 407-645-2035 fax  
Visit our website at [www.southeasternrealty.com](http://www.southeasternrealty.com)