

Title Center

Office Space for Lease



2211 Lee Road,
Winter Park, FL 32789

Property Details:

Total Space Available	1,369 RSF
Rental Rate	TBD
Min. Divisible	1,369 RSF
Max. Contiguous	1,369 RSF
Property Type	Office
Building Sizes, combined	40,582 SF
Class	B
Zoning Description	O-1

Spaces:

Suite	Space Available	Price	Lease Type	Date Available	Description
2211 - Suite 210	1,369 RSF	TBD	Full Service	9/1/2022	See attached floor plan

Location Description:

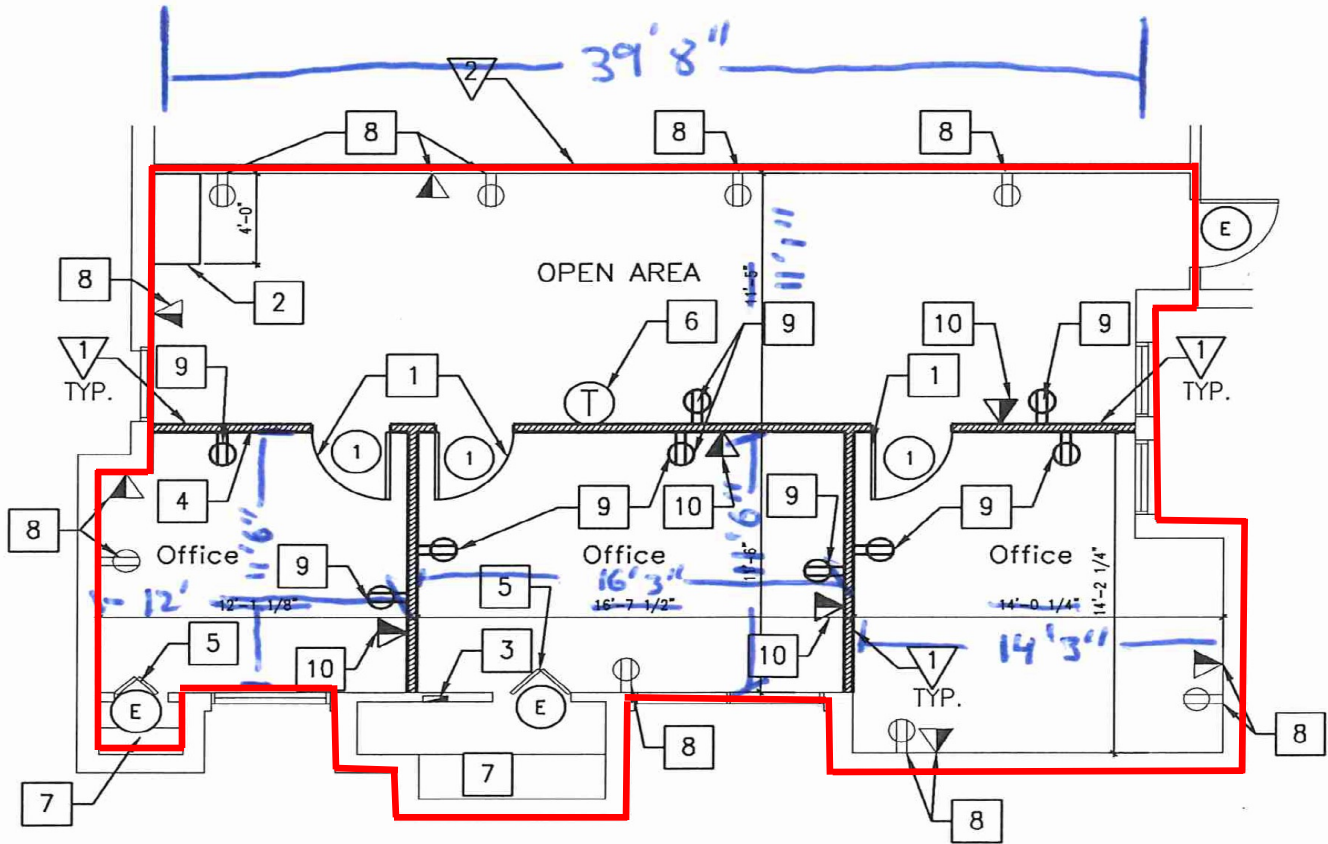
- Winter Park address/ Good Parking
- Two story, Full-Service Office building
- Convenient access to I-4 and US Hwy 17-92
- Minutes from Downtown Winter Park, Downtown Orlando, Maitland, and Altamonte Springs
- Close to new retail/ restaurants in Winter Park



Commercial Sales & Leasing | Property Management | Project Development | Acquisitions & Dispositions | Construction Services

Southeastern Realty Group, Inc. - 933 Lee Road Suite 400 - Orlando, FL 32810 - t: 407-629-5595 - f: 407-645-2035

2211 Lee Road - Suite 210 Floorplan:



CONSTRUCTION PLAN

3/16" = 1'-0"



1,369 RSF Available

Southeastern Realty Group
933 Lee Road, Suite 400, Orlando, Florida 32810
407-629-5595 phone, 407-645-2035 fax
Visit our website at www.southeasternrealty.com

The information contained herein is from sources deemed reliable, but no warranty or representation is made as to the accuracy thereof and no liability may be imposed.