

Title Center

Office Space for Lease



**2211 Lee Road,
Winter Park, FL 32789**

Property Details:

Total Space Available	1,719 RSF
Rental Rate	TBD
Min. Divisible	627 RSF
Max. Contiguous	1,092 RSF
Property Type	Office
Building Size	19,923 SF
Class	B
Zoning Description	O-1

Spaces:

Suite	Space Available	Term	Price	Lease Type	Date Available	Description
209 / 209A	627 RSF	Negotiable	TBD	Full Service	July 1, 2025	See attached floor plan
213	1,092 RSF	3 - 5 Years	TBD	Full Service	120 Days	See attached floor plan

Location Description:

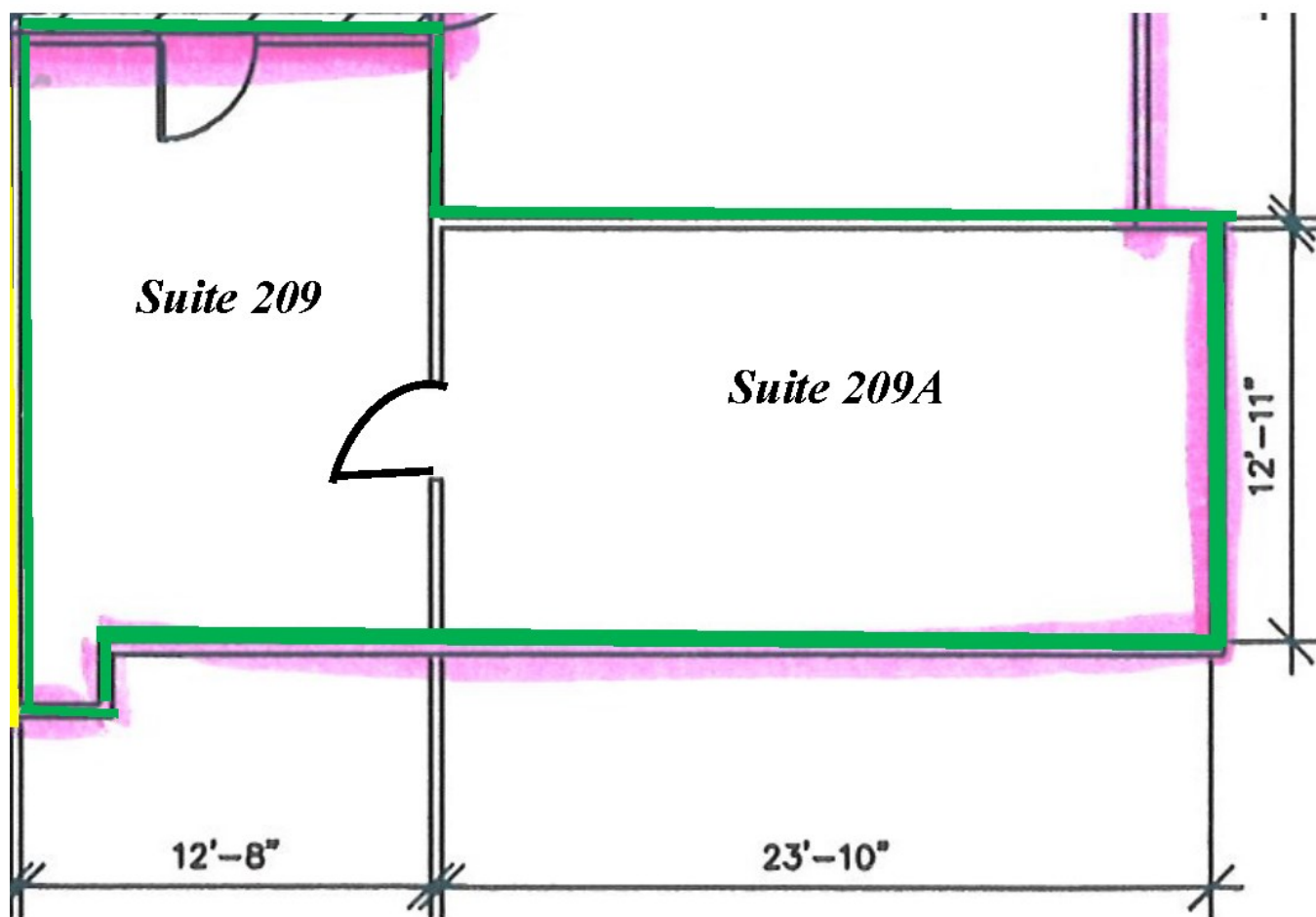
- Winter Park address/ Good Parking
- Convenient access to I-4 and US Hwy 17-92
- Minutes from Downtown Winter Park, Downtown Orlando, Maitland, and Altamonte Springs
- Close to new retail / restaurants in Winter Park & Bus Line



Commercial Sales & Leasing | Property Management | Project Development | Acquisitions & Dispositions | Construction Services

Southeastern Realty Group, Inc. - 933 Lee Road Suite 400 - Orlando, FL 32810 - t: 407-629-5595 - f: 407-645-2035

2211 Lee Road - Suite 209 / 209A Floor Plan:

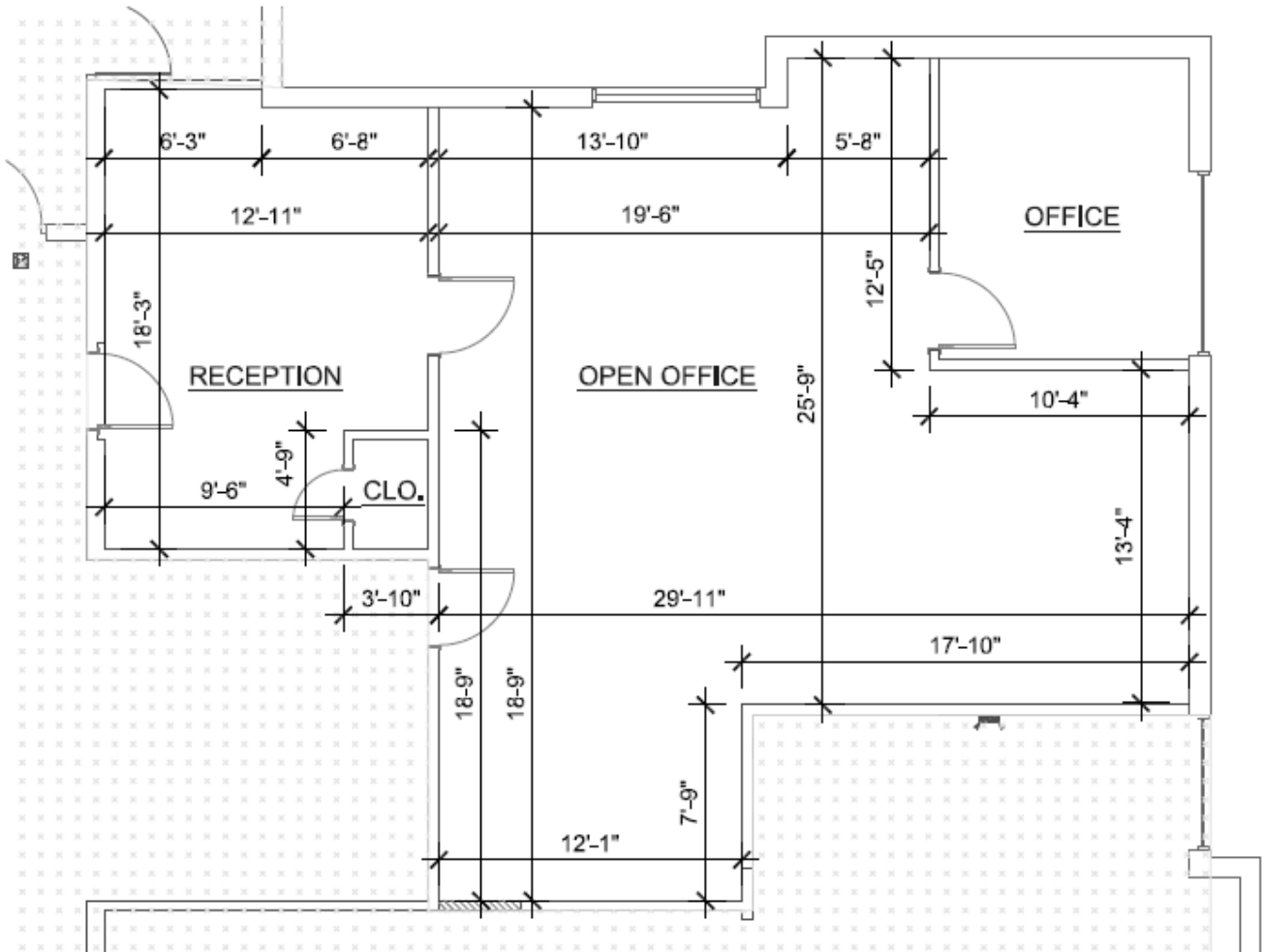


627 RSF Available

Southeastern Realty Group
933 Lee Road, Suite 400, Orlando, Florida 32810
407-629-5595 phone, 407-645-2035 fax
Visit our website at www.southeasternrealty.com

The information contained herein is from sources deemed reliable, but no warranty or representation is made as to the accuracy thereof and no liability may be imposed.

2211 Lee Road - Suite 213 Floor Plan:



Floor Plan - Dimensions

1,092 RSF



SCALE: 1/8" = 1'-0"

Dimensions are approximate

1,092 RSF Available

Southeastern Realty Group
933 Lee Road, Suite 400, Orlando, Florida 32810
407-629-5595 phone, 407-645-2035 fax
Visit our website at www.southeasternrealty.com

The information contained herein is from sources deemed reliable, but no warranty or representation is made as to the accuracy thereof and no liability may be imposed.