

Title Center

Office Space for Lease



**2211 Lee Road,
Winter Park, FL 32789**

Property Details:

| | |
|-----------------------|-----------|
| Total Space Available | 3,800 RSF |
| Rental Rate | TBD |
| Min. Divisible | 3,800 RSF |
| Max. Contiguous | 3,800 RSF |
| Property Type | Office |
| Building Size | 19,923 SF |
| Class | B |
| Zoning Description | O-1 |

Spaces:

| Suite | Space Available | Term | Price | Lease Type | Date Available | Description |
|------------------|-----------------|-------------|-------|--------------|----------------|-------------------------|
| 2211 - Suite 207 | 3,800 RSF | 3 - 5 Years | TBD | Full Service | June 1, 2024 | See attached floor plan |

Location Description:

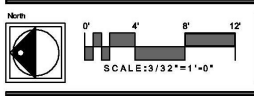
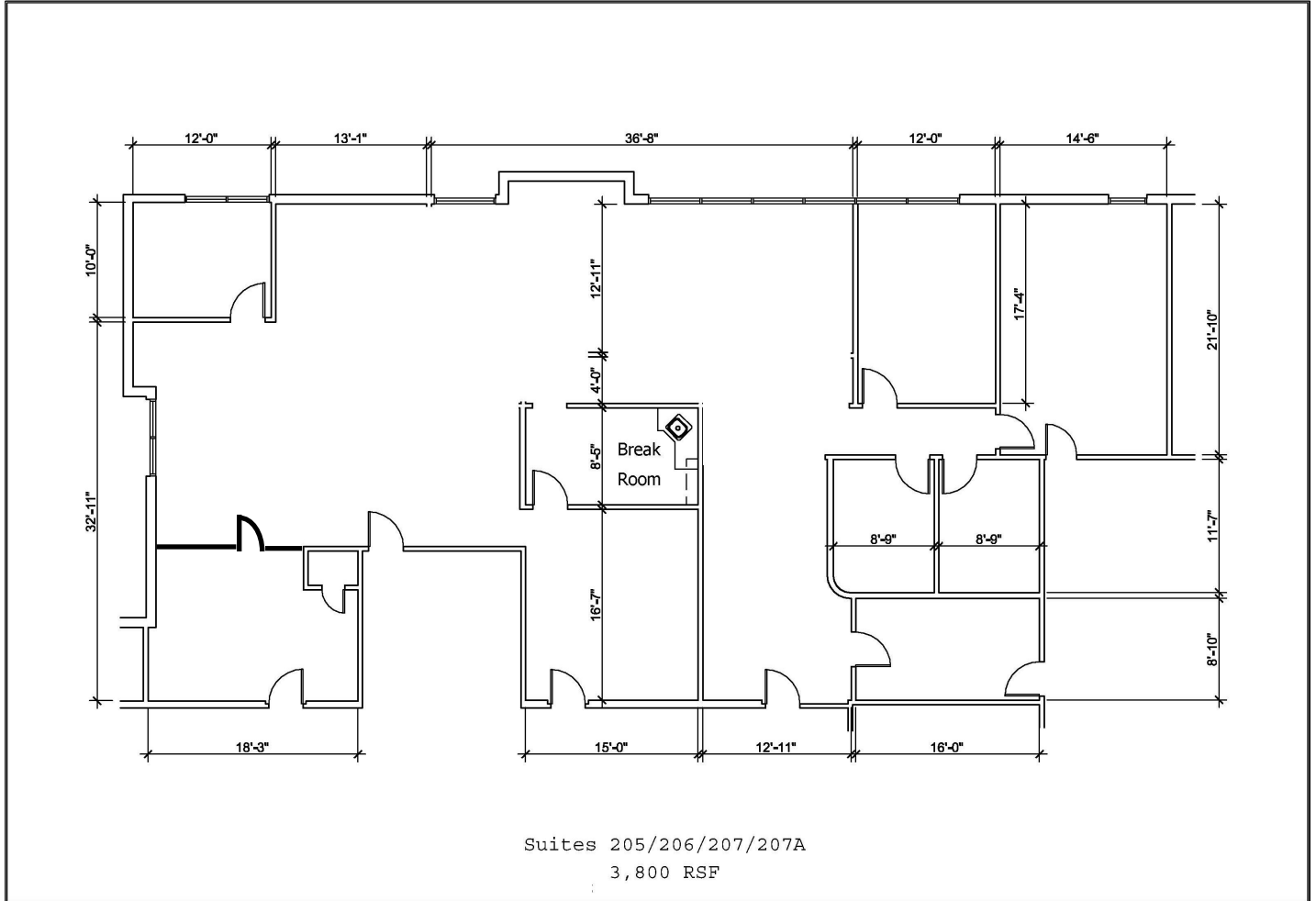
- Winter Park address/ Good Parking
- Convenient access to I-4 and US Hwy 17-92
- Minutes from Downtown Winter Park, Downtown Orlando, Maitland, and Altamonte Springs
- Close to new retail / restaurants in Winter Park & Bus Line



Commercial Sales & Leasing | Property Management | Project Development | Acquisitions & Dispositions | Construction Services

Southeastern Realty Group, Inc. - 933 Lee Road Suite 400 - Orlando, FL 32810 - t: 407-629-5595 - f: 407-645-2035

2211 Lee Road - Suite 207 Floorplan:



2·2·1·1 L·E·E R·O·A·D
OFFICE BUILDING
ORLANDO, FLORIDA



3,800 RSF Available

Southeastern Realty Group
933 Lee Road, Suite 400, Orlando, Florida 32810
407-629-5595 phone, 407-645-2035 fax
Visit our website at www.southeasternrealty.com

The information contained herein is from sources deemed reliable, but no warranty or representation is made as to the accuracy thereof and no liability may be imposed.