

Title Center

Office Space for Lease



**2211 Lee Road,
Winter Park, FL 32789**

Property Details:

Total Space Available	4,157 RSF
Rental Rate	TBD
Min. Divisible	357 RSF
Max. Contiguous	3,800 RSF
Property Type	Office
Building Size	19,923 SF
Class	B
Zoning Description	O-1

Spaces:

Suite	Space Available	Term	Price	Lease Type	Date Available	Description
2211 - Suite 205A	357 RSF	3 - 5 Years	TBD	Full Service	Now	See attached floor plan
2211 - Suite 207	3,800 RSF	3 - 5 Years	TBD	Full Service	June 1, 2024	See attached floor plan

Location Description:

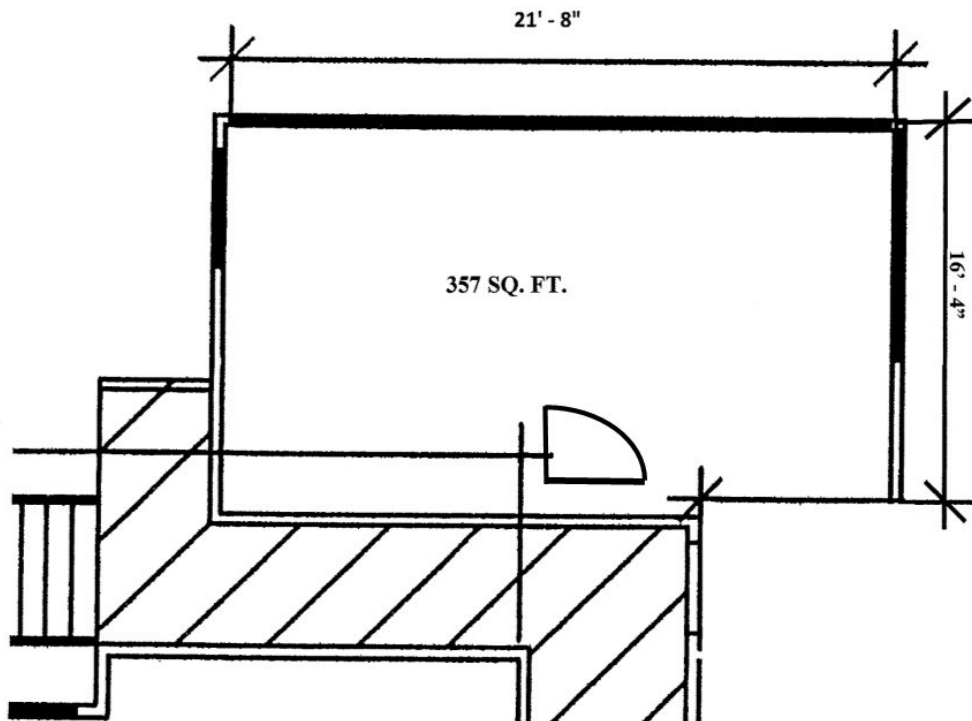
- Winter Park address/ Good Parking
- Convenient access to I-4 and US Hwy 17-92
- Minutes from Downtown Winter Park, Downtown Orlando, Maitland, and Altamonte Springs
- Close to new retail / restaurants in Winter Park & Bus Line



Commercial Sales & Leasing | Property Management | Project Development | Acquisitions & Dispositions | Construction Services

Southeastern Realty Group, Inc. - 933 Lee Road Suite 400 - Orlando, FL 32810 - t: 407-629-5595 - f: 407-645-2035

2211 Lee Road - Suite 205A Floorplan:

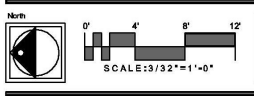
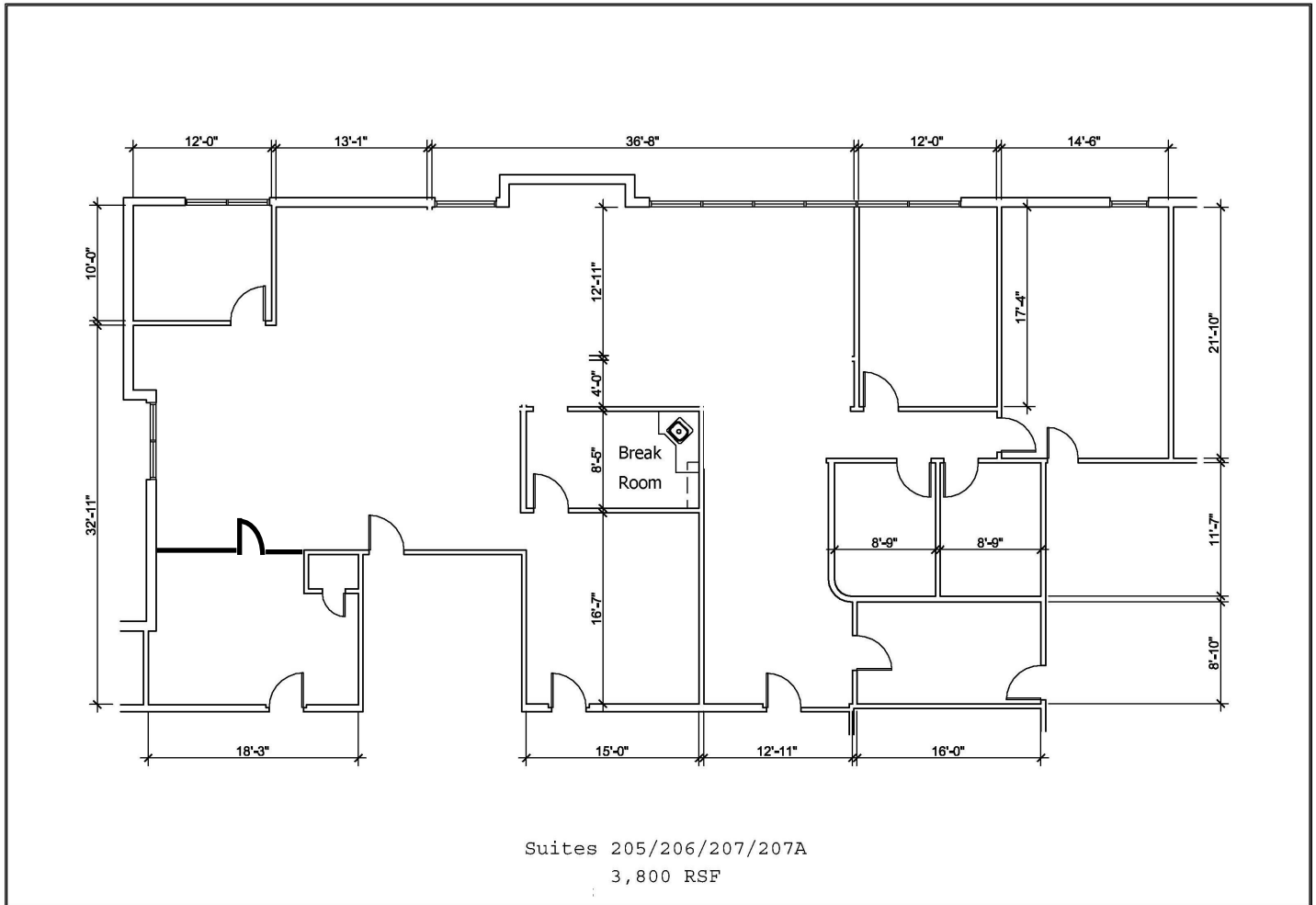


Bldg. 2211 Suite 205A
357 Rentable Sq. Ft.

357 RSF Available

Southeastern Realty Group
933 Lee Road, Suite 400, Orlando, Florida 32810
407-629-5595 phone, 407-645-2035 fax
Visit our website at www.southeasternrealty.com

2211 Lee Road - Suite 207 Floorplan:



2·2·1·1 L·E·E R·O·A·D
OFFICE BUILDING
ORLANDO, FLORIDA



3,800 RSF Available

Southeastern Realty Group
933 Lee Road, Suite 400, Orlando, Florida 32810
407-629-5595 phone, 407-645-2035 fax
Visit our website at www.southeasternrealty.com

The information contained herein is from sources deemed reliable, but no warranty or representation is made as to the accuracy thereof and no liability may be imposed.