

# Title Center

## Office Space for Lease



2211 Lee Road,  
Winter Park, FL 32789

### Property Details:

Total Space Available	4,316 RSF
Rental Rate	TBD
Min. Divisible	1,369 RSF
Max. Contiguous	2,947 RSF
Property Type	Office
Building Size	19,923 SF
Class	B
Zoning Description	O-1

### Spaces:

Suite	Space Available	Price	Lease Type	Date Available	Description
2211 - Suite 109	2,947 RSF	TBD	Full Service	4/1/2023	See attached floor plan
2211 - Suite 210	1,369 RSF	TBD	Full Service	Now	See attached floor plan

### Location Description:

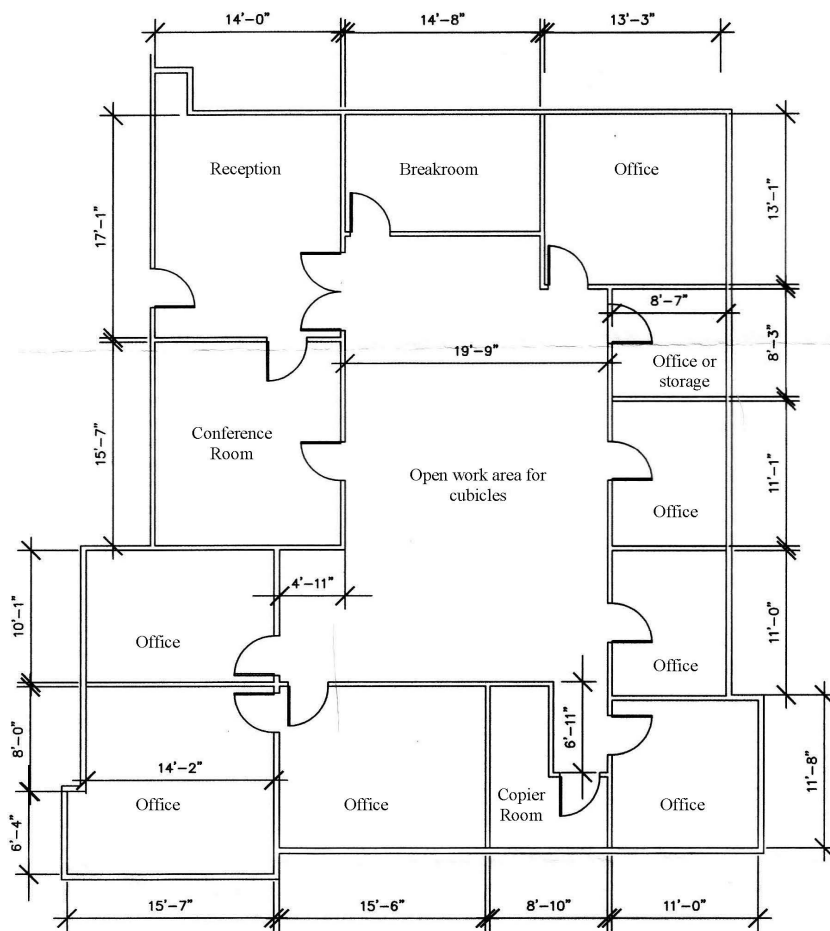
- Winter Park address/ Good Parking
- Two story, Full-Service Office building
- Convenient access to I-4 and US Hwy 17-92
- Minutes from Downtown Winter Park, Downtown Orlando, Maitland, and Altamonte Springs
- Close to new retail/ restaurants in Winter Park



Commercial Sales & Leasing | Property Management | Project Development | Acquisitions & Dispositions | Construction Services

Southeastern Realty Group, Inc. - 933 Lee Road Suite 400 - Orlando, FL 32810 - t: 407-629-5595 - f: 407-645-2035

## 2211 Lee Road - Suite 109 Floorplan:



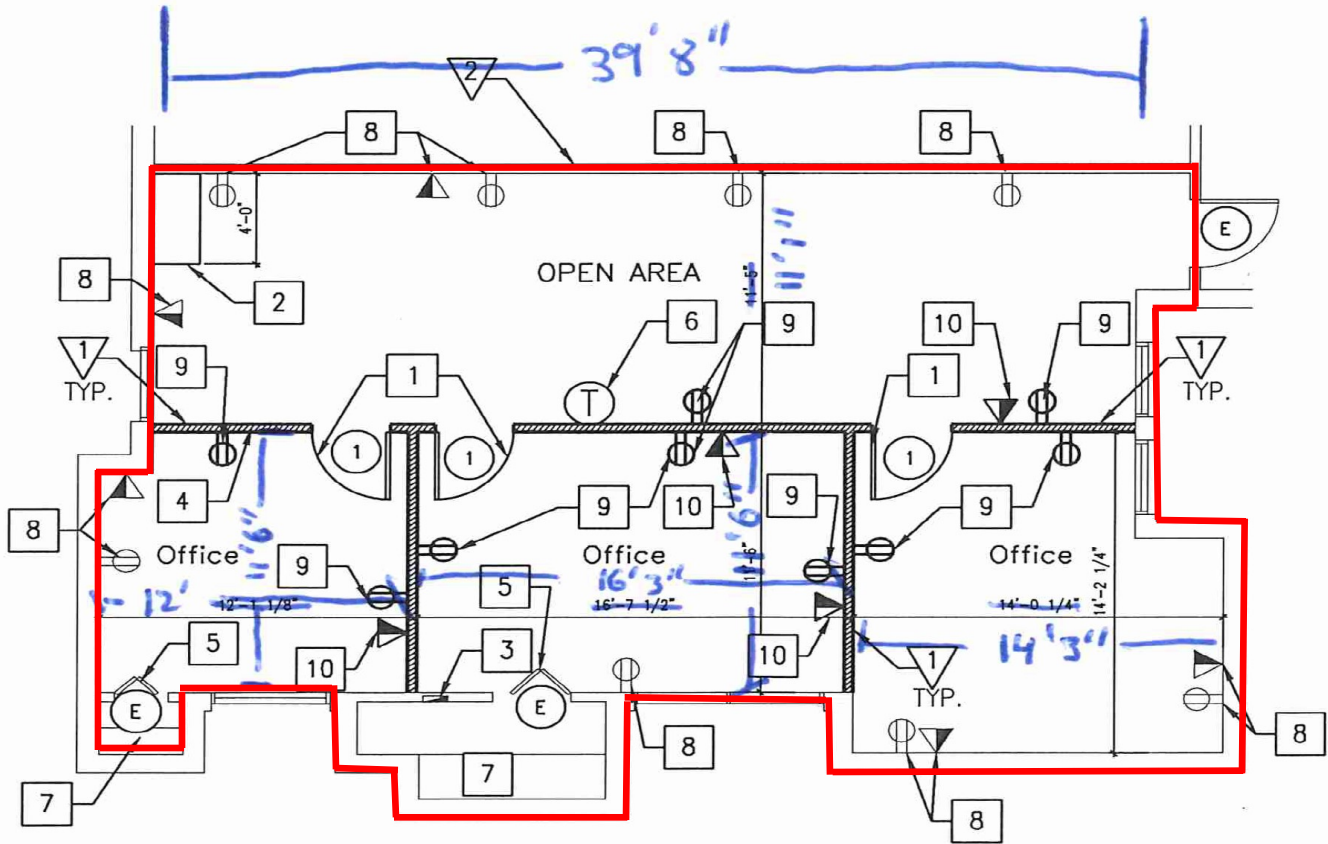
**2,947 Rentable  
Square Feet**

EXISTING PLAN:  
EXECUTIVE SQUARE  
SUITE/109  
2211.LEE.RD.

**2,947 RSF Available**

**Southeastern Realty Group**  
933 Lee Road, Suite 400, Orlando, Florida 32810  
407-629-5595 phone, 407-645-2035 fax  
Visit our website at [www.southeasternrealty.com](http://www.southeasternrealty.com)

**2211 Lee Road - Suite 210 Floorplan:**



CONSTRUCTION PLAN

3/16" = 1'-0"



1,369 RSF Available

Southeastern Realty Group  
933 Lee Road, Suite 400, Orlando, Florida 32810  
407-629-5595 phone, 407-645-2035 fax  
Visit our website at [www.southeasternrealty.com](http://www.southeasternrealty.com)

The information contained herein is from sources deemed reliable, but no warranty or representation is made as to the accuracy thereof and no liability may be imposed.