

# The Enterprise Building

## Office Space for Lease



1110 Douglas Avenue  
Altamonte Springs, Florida 32714

### Property Details:

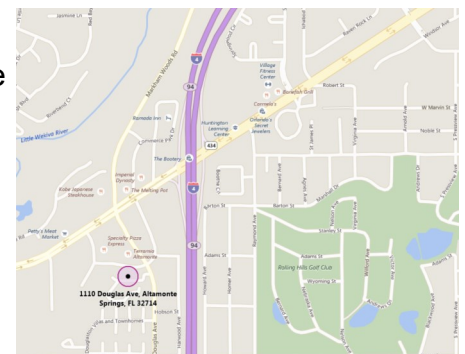
Total Space Available	916 RSF
Rental Rate	Negotiable
Min. Divisible	916 RSF
Max. Contiguous	916 RSF
Property Type	Office
Zoned	MOC-1
Building Class	B
Year Built	1986
Lot Size	2.18 AC

### Spaces:

Suite	Space Available	Max. Contig.	Price PSF	Date Available	Description
2040	916 RSF	916 RSF	TBD	30 Days	Office Suite

### Location Description:

- Zoning allows for office, professional, medical, and personal service type uses
- Beautiful 3-story brick building with recent renovations
- Rent includes electric, interior & exterior maintenance, and janitorial service Mon. - Fri.
- Exterior monument signage availability
- Excellent parking
- Easy access to local amenities

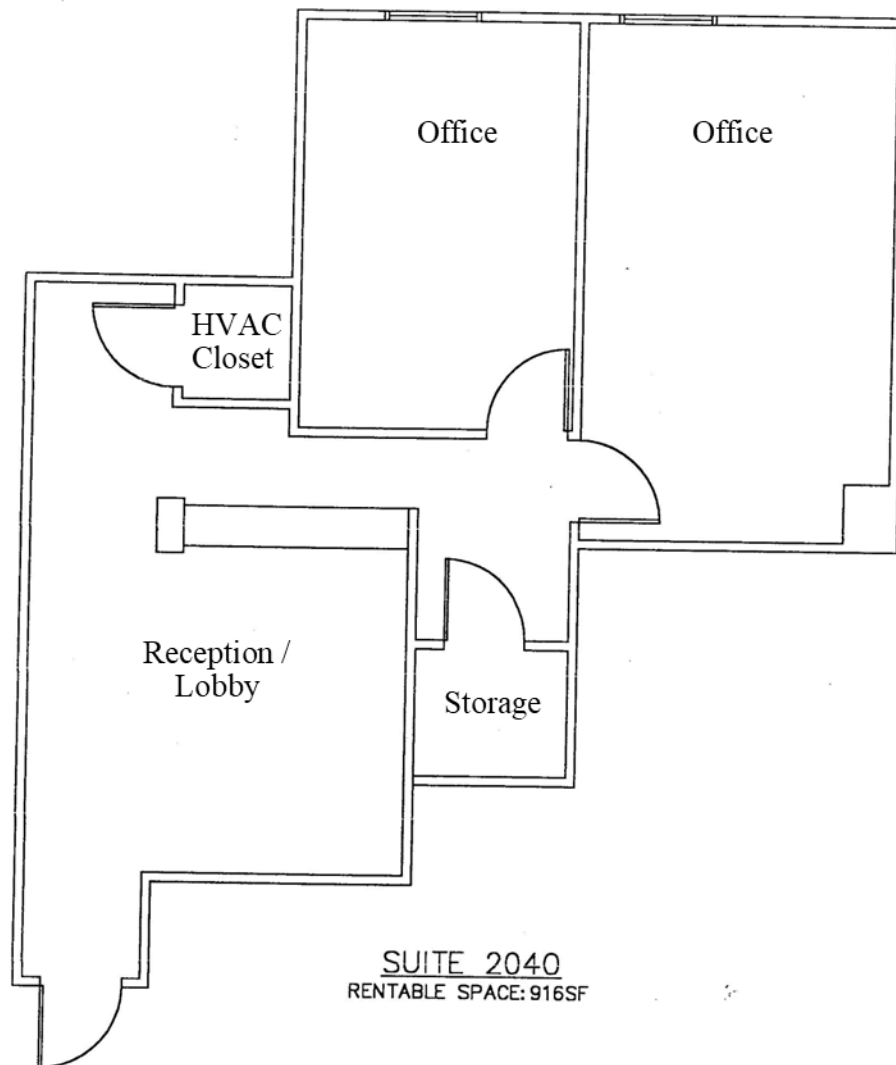


Commercial Sales & Leasing | Property Management | Project Development | Acquisitions & Dispositions | Construction Services

Southeastern Realty Group, Inc. - 933 Lee Road Suite 400 - Orlando, FL 32810 - t: 407-629-5595 - f: 407-645-2035  
Visit our website at [www.southeasternrealty.com](http://www.southeasternrealty.com)

The information contained herein is from sources deemed reliable, but no warranty or representation is made as to the accuracy thereof and no liability may be imposed.

## Floor Plan:



1110 Douglas Avenue  
Suite 2040  
Altamonte Springs, FL 32714  
916 RSF

Southeastern Realty Group  
933 Lee Road, Suite 400, Orlando, Florida 32810  
407-629-5595 phone, 407-645-2035 fax  
Visit our website at [www.southeasternrealty.com](http://www.southeasternrealty.com)

The information contained herein is from sources deemed reliable, but no warranty or representation is made as to the accuracy thereof and no liability may be imposed.

## Building Photos:



Southeastern Realty Group  
933 Lee Road, Suite 400, Orlando, Florida 32810  
407-629-5595 phone, 407-645-2035 fax  
Visit our website at [www.southeasternrealty.com](http://www.southeasternrealty.com)

The information contained herein is from sources deemed reliable, but no warranty or representation is made as to the accuracy thereof and no liability may be imposed.