

The Enterprise Building

Office Space for Lease



1110 Douglas Avenue,
Altamonte Springs, Florida 32714

Property Details:

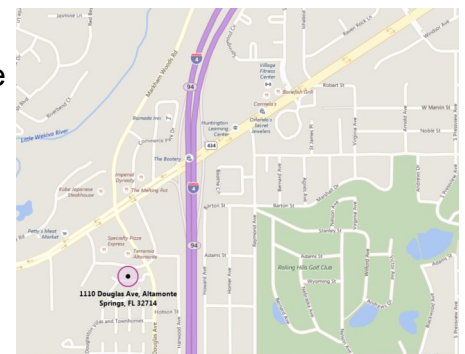
Total Space Available	699 RSF
Rental Rate	Negotiable
Min. Divisible	699 RSF
Max. Contiguous	699 RSF
Property Type	Office
Zoned	MOC-1
Building Class	B
Year Built	1986
Lot Size	2.18 AC

Spaces:

Suite	Space Available	Term	Price PSF	Date Available	Description
2010	699 RSF	3 Years	Negotiable	30 Days	Prior use was esthetician.

Location Description:

- Zoning allows for office, professional, medical, and personal service type uses
- Beautiful 3-story brick building with recent renovations
- Rent includes electric, interior & exterior maintenance, and janitorial service Mon. - Fri.
- Exterior monument signage availability
- Parking ratio: 4.56 / 1,000 SF
- Easy access to local amenities

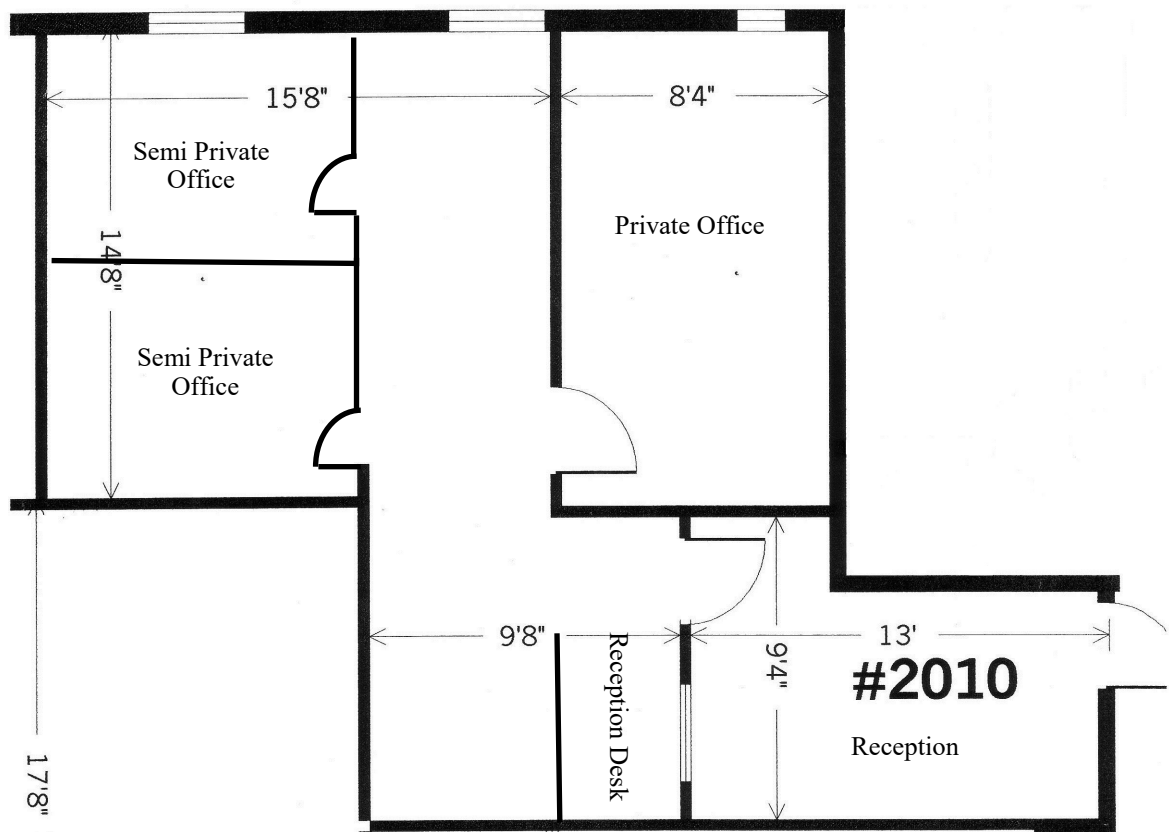


Commercial Sales & Leasing | Property Management | Project Development | Acquisitions & Dispositions | Construction Services

Southeastern Realty Group, Inc. - 933 Lee Road Suite 400 - Orlando, FL 32810 - t: 407-629-5595 - f: 407-645-2035
Visit our website at www.southeasternrealty.com

The information contained herein is from sources deemed reliable, but no warranty or representation is made as to the accuracy thereof and no liability may be imposed.

Suite 2010 - Floor Plan:

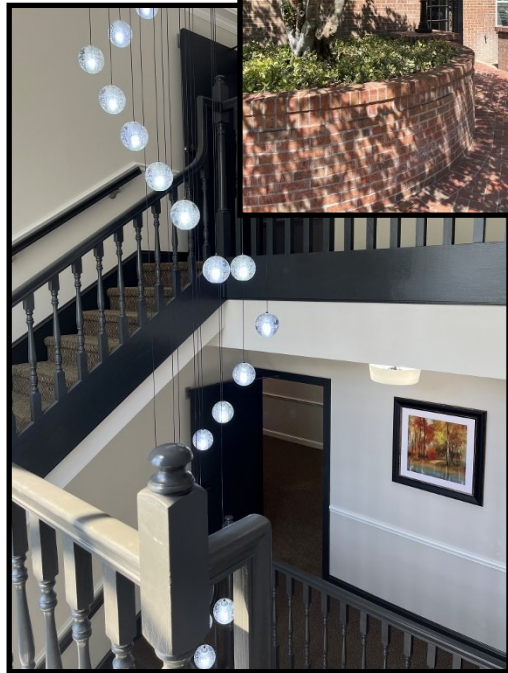
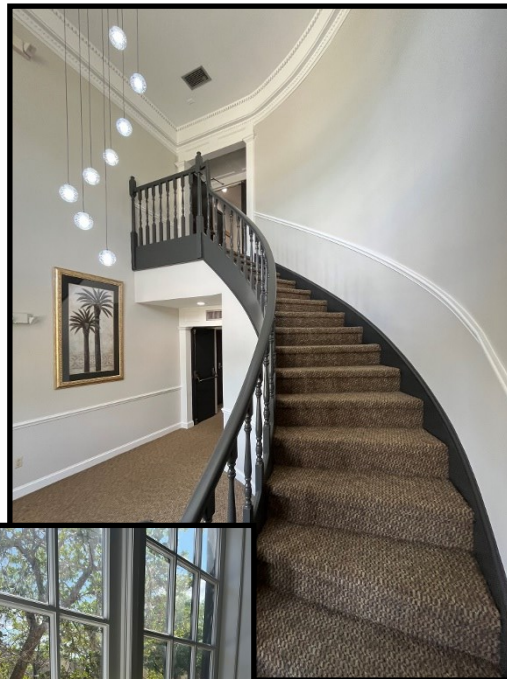
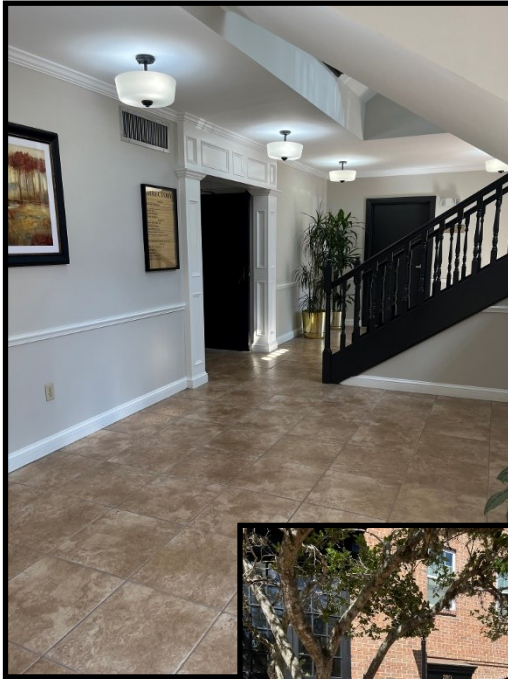


699 RSF

Southeastern Realty Group
933 Lee Road, Suite 400, Orlando, Florida 32810
407-629-5595 phone, 407-645-2035 fax
Visit our website at www.southeasternrealty.com

The information contained herein is from sources deemed reliable, but no warranty or representation is made as to the accuracy thereof and no liability may be imposed.

Building Photos:



Southeastern Realty Group
933 Lee Road, Suite 400, Orlando, Florida 32810
407-629-5595 phone, 407-645-2035 fax
Visit our website at www.southeasternrealty.com

The information contained herein is from sources deemed reliable, but no warranty or representation is made as to the accuracy thereof and no liability may be imposed.