

# Sun Plaza

## Office Space for Lease



3379, 3467, 3479, & 3489 W. Vine St.  
Kissimmee, Florida 34741

### Property Details:

Total Space Available	4,184 RSF
Rental Rate	TBD
Min. Divisible	808 RSF
Max. Contiguous	1,404 RSF
Property Type	Office
Property Sub-type	Office Building
Zoning	T5-U Mixed Use Urban Core*

\*Allows for many uses.

Spaces: Suite	Space Available	Price	Date Available	Lease Type	Description
3379/309	1,009 RSF	Call for Pricing	November 1, 2025	NNN	Office / Professional Space
3467	808 RSF	Call for Pricing	October 1, 2025	NNN	Office / Professional Space
3479	1,404 RSF	Call for Pricing	November 1, 2025	NNN	Office / Professional Space
3489	963 RSF	Call for Pricing	January 1, 2026	NNN	Office / Professional Space

### Location Description:

Excellent location access from Vine Street/ Hwy 192  
Adjacent to shopping and restaurants  
Excellent Parking  
Fed Ex and UPS drop box on property  
Less than 1 mile from Kissimmee Gateway Airport



Commercial Sales & Leasing | Property Management | Project Development | Acquisitions & Dispositions | Construction Services

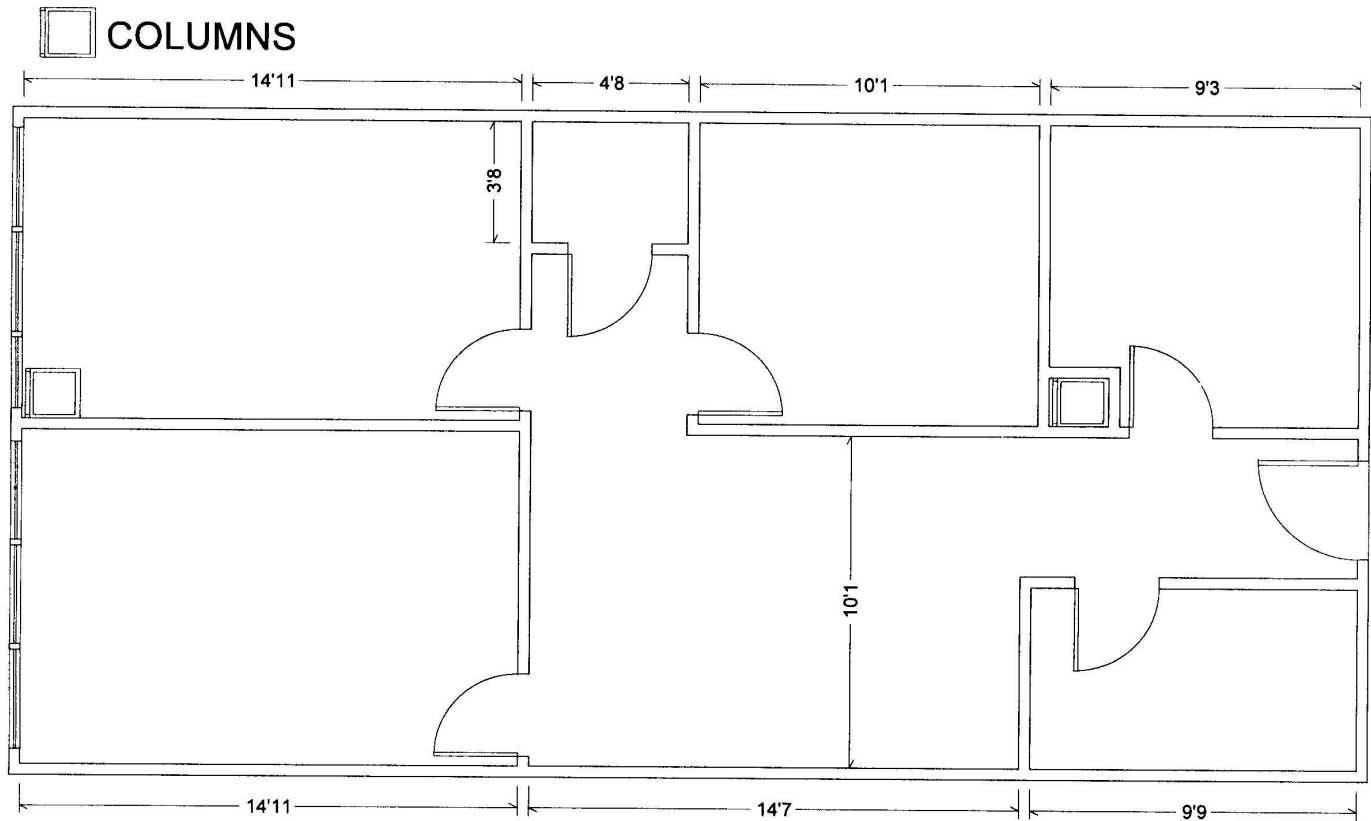
Southeastern Realty Group, Inc. - 933 Lee Road Suite 400 - Orlando, FL 32810 - ☎ 407-629-5595 - ☎ 407-645-2035  
www.southeasternrealty.com

The information contained herein is from sources deemed reliable, but no warranty or representation is made as to the accuracy thereof and no liability may be imposed.

# Unit 3379 / Suite 309 - Floor Plan:

SUN PLAZA - BLDG 1

SUITE 309  
1,009 R.S.F.



ALL DIMENSIONS & CONDITIONS ARE APPROXIMATE

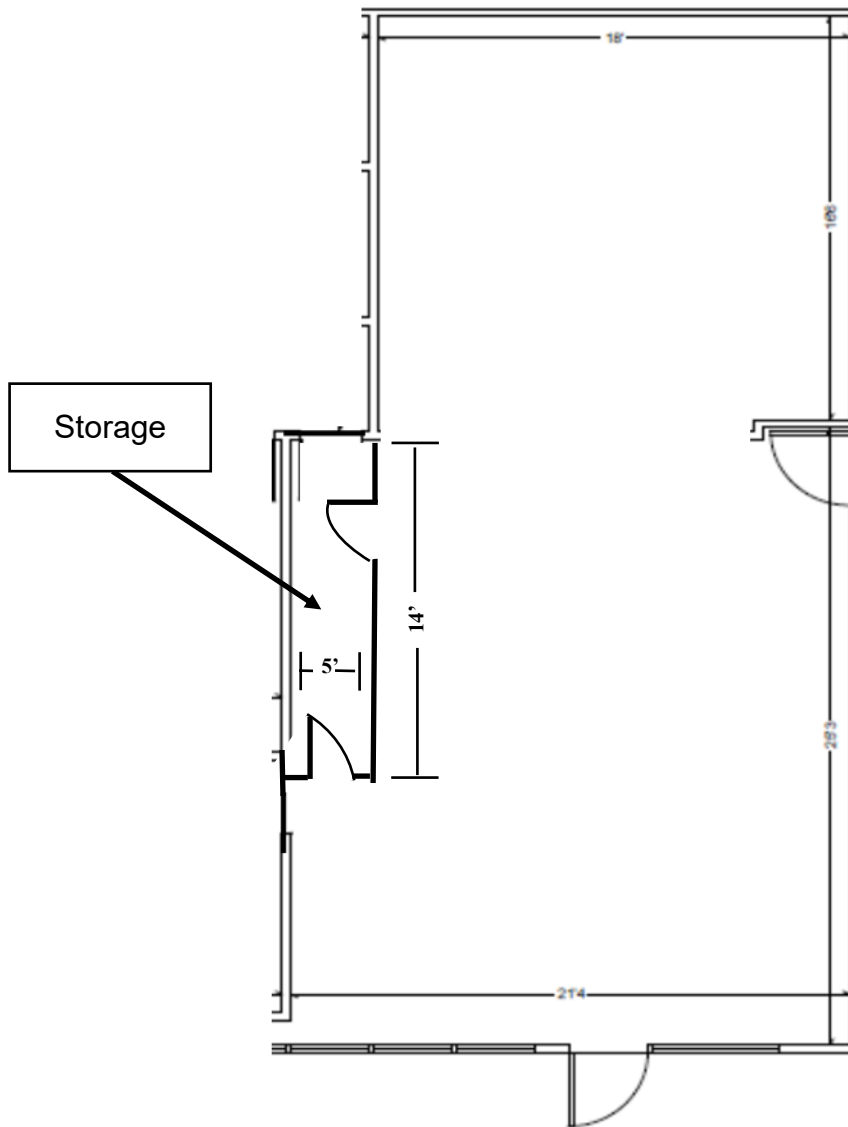
3379 W. Vine Street, Suite 309  
Kissimmee, FL 34741  
808 RSF

Commercial Sales & Leasing | Property Management | Project Development | Acquisitions & Dispositions | Construction Services

Southeastern Realty Group, Inc. - 933 Lee Road Suite 400 - Orlando, FL 32810 - t: 407-629-5595 - f: 407-645-2035  
[www.southeasternrealty.com](http://www.southeasternrealty.com)

The information contained herein is from sources deemed reliable, but no warranty or representation is made as to the accuracy thereof and no liability may be imposed.

# Unit 3467 - Floor Plan:



**ALL DIMENSIONS ARE APPROXIMATE**

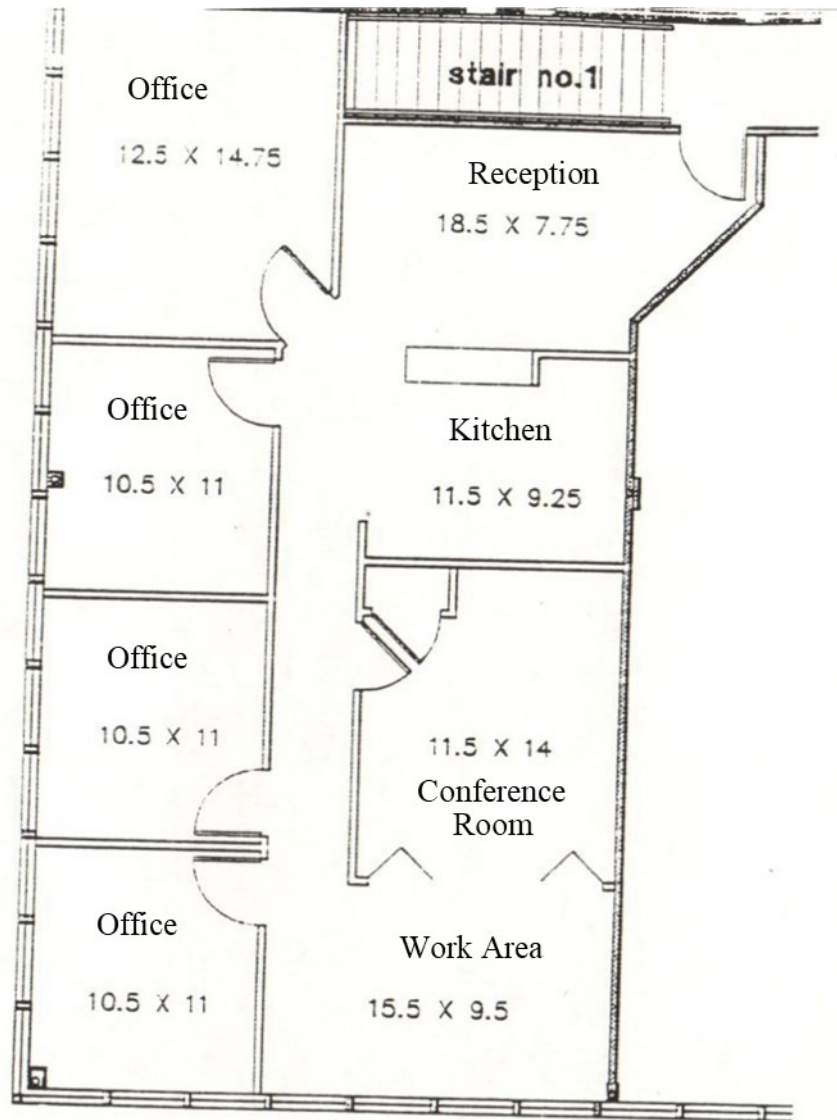
3467 W. Vine Street  
Kissimmee, FL 34741  
808 RSF

Commercial Sales & Leasing | Property Management | Project Development | Acquisitions & Dispositions | Construction Services

Southeastern Realty Group, Inc. - 933 Lee Road Suite 400 - Orlando, FL 32810 - t: 407-629-5595 - f: 407-645-2035  
[www.southeasternrealty.com](http://www.southeasternrealty.com)

The information contained herein is from sources deemed reliable, but no warranty or representation is made as to the accuracy thereof and no liability may be imposed.

# Unit 3479 - Floor Plan:



**ALL DIMENSIONS ARE APPROXIMATE**

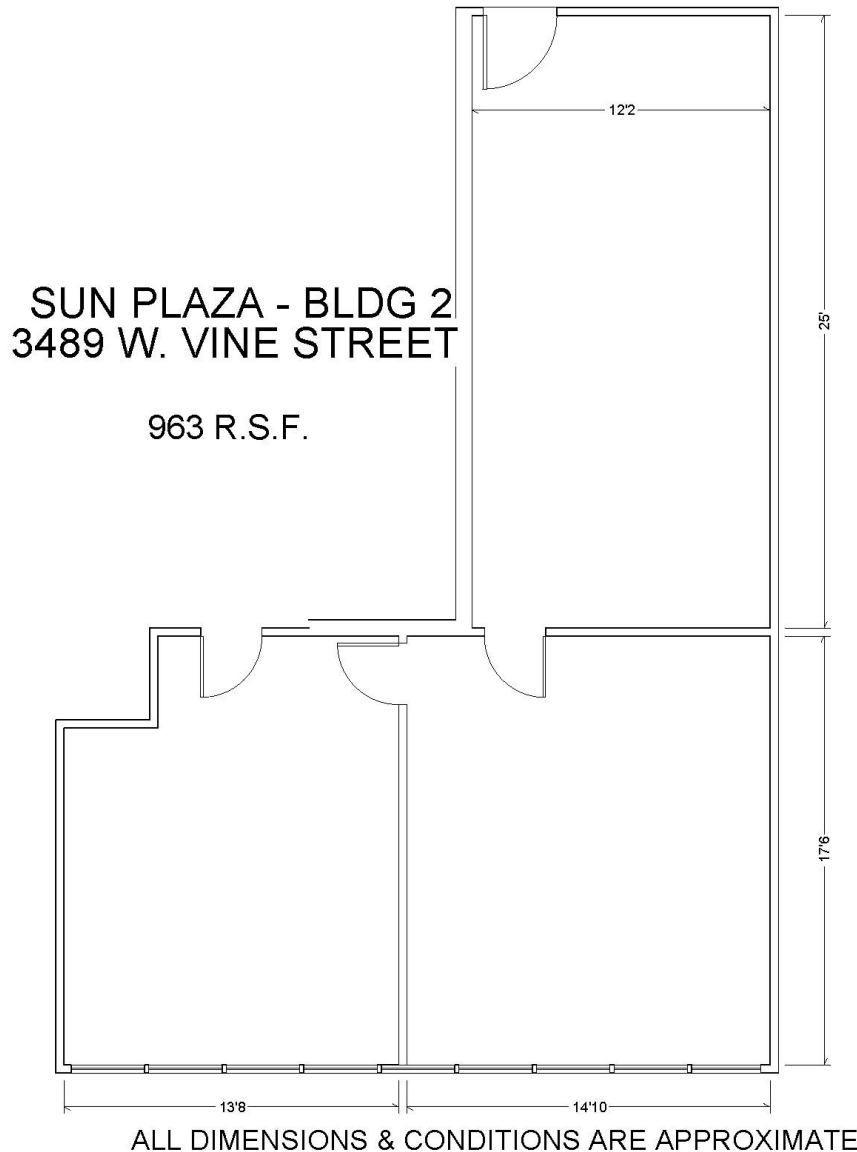
3479 W. Vine Street  
Kissimmee, FL 34741  
1,404 RSF

Commercial Sales & Leasing | Property Management | Project Development | Acquisitions & Dispositions | Construction Services

Southeastern Realty Group, Inc. - 933 Lee Road Suite 400 - Orlando, FL 32810 - t: 407-629-5595 - f: 407-645-2035  
[www.southeasternrealty.com](http://www.southeasternrealty.com)

The information contained herein is from sources deemed reliable, but no warranty or representation is made as to the accuracy thereof and no liability may be imposed.

# Unit 3489 - Floor Plan:



3489 W. Vine Street  
Kissimmee, FL 34741  
963 RSF

Commercial Sales & Leasing | Property Management | Project Development | Acquisitions & Dispositions | Construction Services

Southeastern Realty Group, Inc. - 933 Lee Road Suite 400 - Orlando, FL 32810 - t: 407-629-5595 - f: 407-645-2035  
[www.southeasternrealty.com](http://www.southeasternrealty.com)

The information contained herein is from sources deemed reliable, but no warranty or representation is made as to the accuracy thereof and no liability may be imposed.