

Sun Plaza

Office Space for Lease



3355 & 3359 W. Vine St.
Kissimmee, Florida 34741

Property Details:

Total Space Available	2,208 RSF
Rental Rate	TBD
Min. Divisible	944 RSF
Max. Contiguous	2,208 RSF
Property Type	Office
Property Sub-type	Office Building
Zoning	T5-U Mixed Use Urban Core

Spaces:

Suite	Space Available	Price	Date Available	Lease Type	Description
3355 - 102	944 RSF	TBD	Available Now	NNN	Office space
3359 - 104	1,264 RSF	TBD	March 1, 2022	NNN	Office space

Location Description:

Excellent location access from Vine Street/ Hwy 192
Adjacent to shopping and restaurants
Ample Parking
Fed Ex and UPS drop box on property
T1 High speed internet available
1/2 mile from Kissimmee Executive Airport

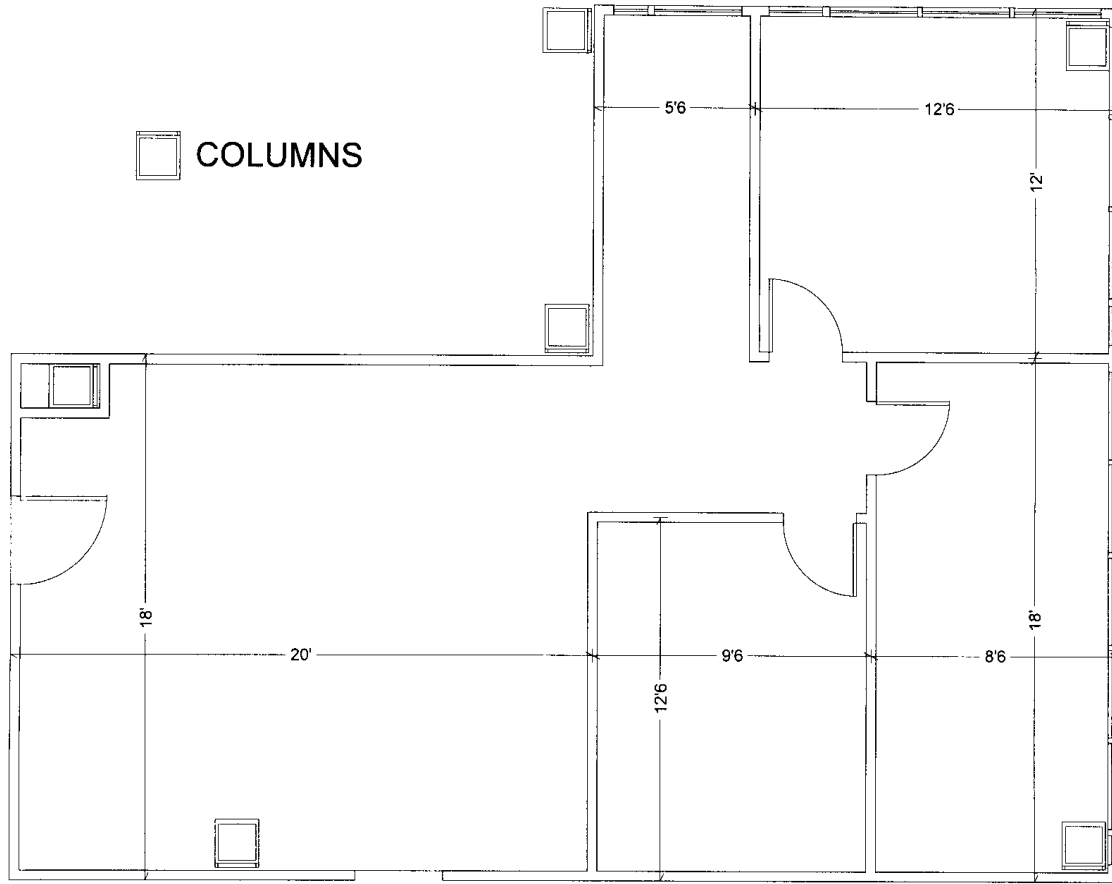


Commercial Sales & Leasing | Property Management | Project Development | Acquisitions & Dispositions | Construction Services

Southeastern Realty Group, Inc. - 933 Lee Road Suite 400 - Orlando, FL 32810 - t: 407-629-5595 - f: 407-645-2035

Floor Plan — Suite 3355 - 102:

SUN PLAZA - BLDG 1
SUITE 102
944 R.S.F.



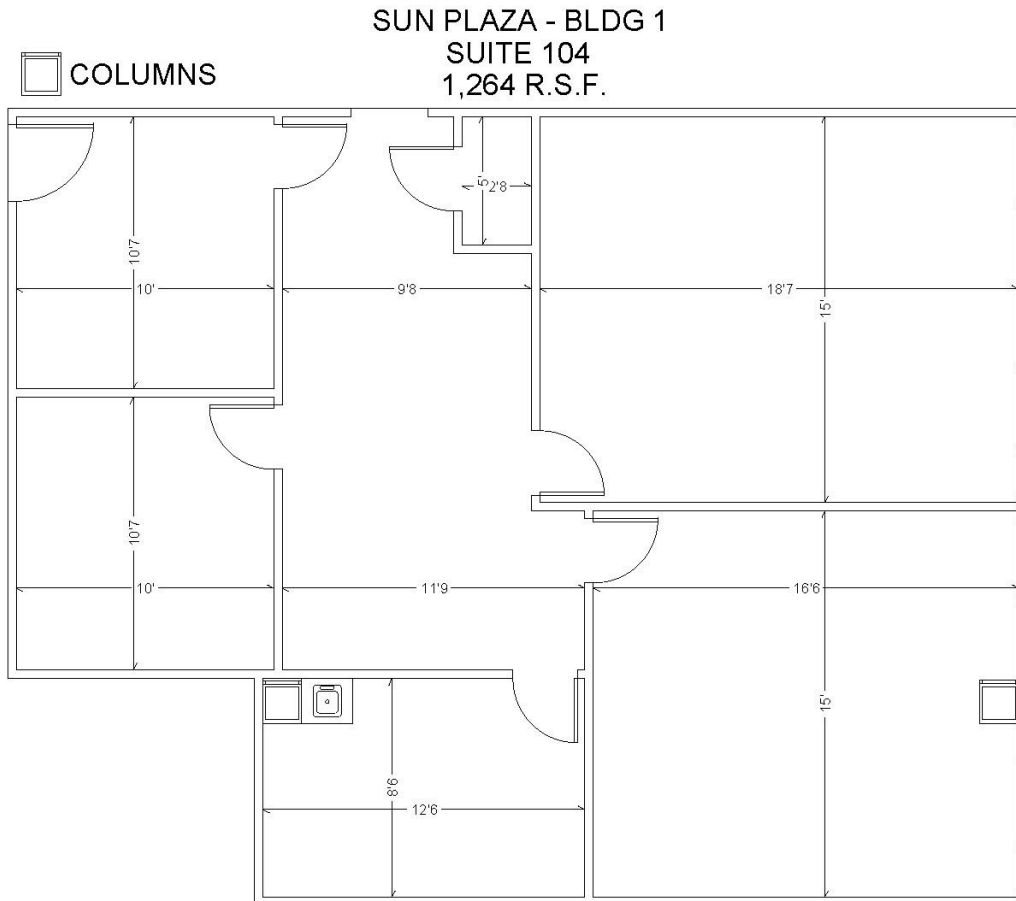
ALL DIMENSIONS & CONDITIONS ARE APPROXIMATE

3355 W. Vine Street, Suite 102
Kissimmee, FL 34741

Commercial Sales & Leasing | Property Management | Project Development | Acquisitions & Dispositions | Construction Services
Southeastern Realty Group, Inc. - 933 Lee Road Suite 400 - Orlando, FL 32810 - t: 407-629-5595 - f: 407-645-2035

The information contained herein is from sources deemed reliable, but no warranty or representation is made as to the accuracy thereof and no liability may be imposed.

Floor Plan — Suite 3359 - 104:



ALL DIMENSIONS & CONDITIONS ARE APPROXIMATE

3359 W. Vine Street, Suite 104
Kissimmee, FL 34741

Commercial Sales & Leasing | Property Management | Project Development | Acquisitions & Dispositions | Construction Services
Southeastern Realty Group, Inc. - 933 Lee Road Suite 400 - Orlando, FL 32810 - t: 407-629-5595 - f: 407-645-2035

The information contained herein is from sources deemed reliable, but no warranty or representation is made as to the accuracy thereof and no liability may be imposed.