

Rosewood Plaza

Retail/ Office Space for Lease Medical Office



3915, 3919 Rosewood Way
3923 - 3927, 3939 Rosewood Way
Orlando, FL 32810

Property Details:

Total Space Available	9,550 SF
Rental Rate	Negotiable NNN
Min. Divisible	1,700 SF
Max. Contiguous	3,000 SF
Property Type	Retail
Property Sub-type	Medical Office
Building Size	28,265 SF

Spaces:

Suite	Space Available	Min Divisible	Max Contiguous	Price	Available	Description
3915	1,700 SF	1,700 SF	1,700 SF	Upon Request	Now	Retail/Office
3919	2,000 SF	2,000 SF	2,000 SF	Upon Request	Now	Retail/Office
3923-3927	3,000 SF	3,000 SF	3,000 SF	Upon Request	Now	Medical Office Fully Built-Out
3939	2,850 SF	2,850 SF	2,850 SF	Upon Request	1/1/22	Retail/Office

Location Description:

- Single story building
- Quick Access to I-4 and downtown
- Pylon signage available
- 24 hour traffic count: 30,500 vehicles
- Ample and convenient parking
- Restaurants and shopping nearby
- AC-1/W Zoning



Commercial Sales & Leasing | Property Management | Project Development | Acquisitions & Dispositions | Construction Services

Southeastern Realty Group, Inc. - 933 Lee Road Suite 400 - Orlando, FL 32810 - t: 407-629-5595 - f: 407-645-2035

Floor Plan:

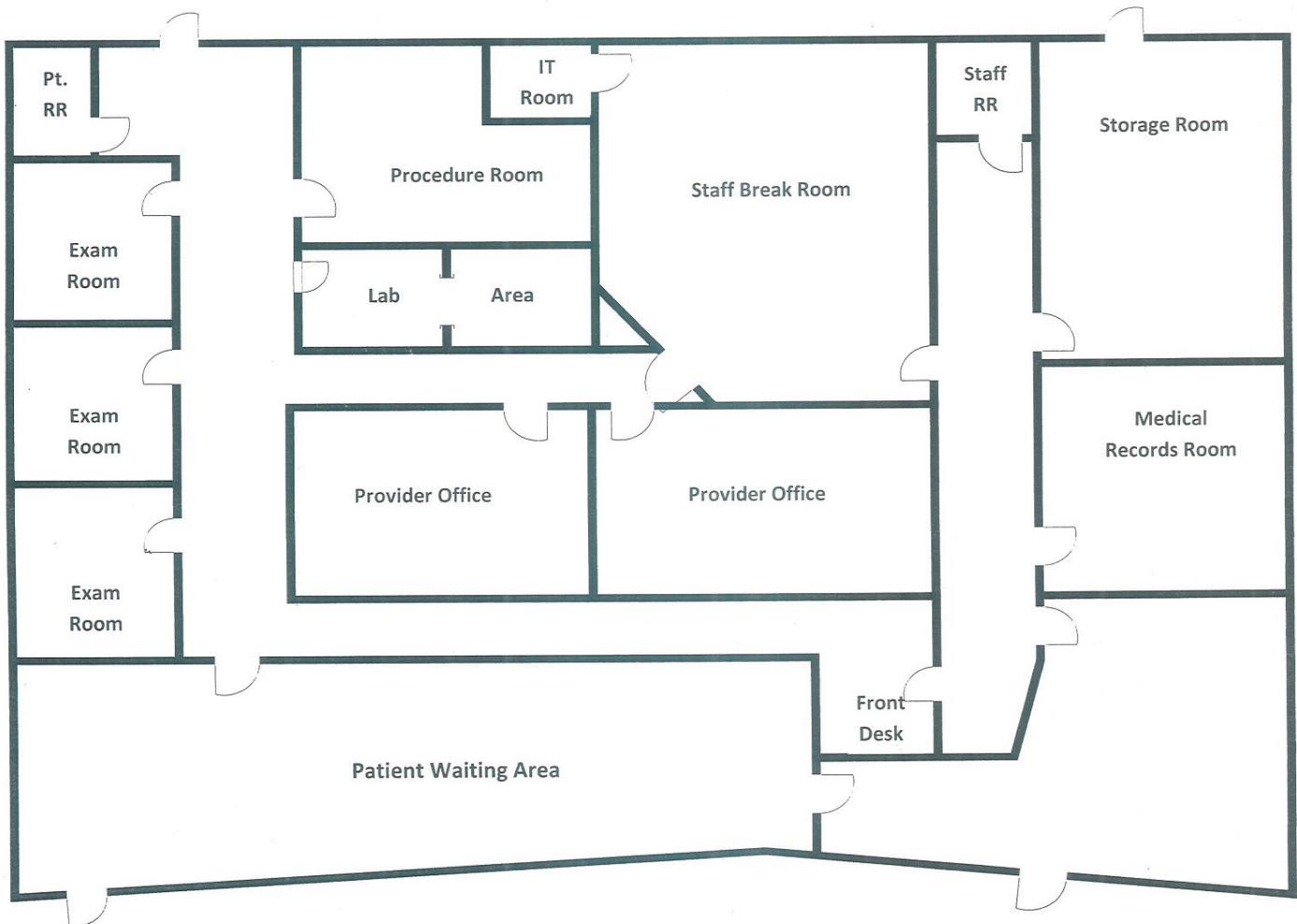
Rosewood Plaza

3923 - 3927 Rosewood Way

Orlando, FL 32810

3,000 SF

Fully Built-Out Medical Office

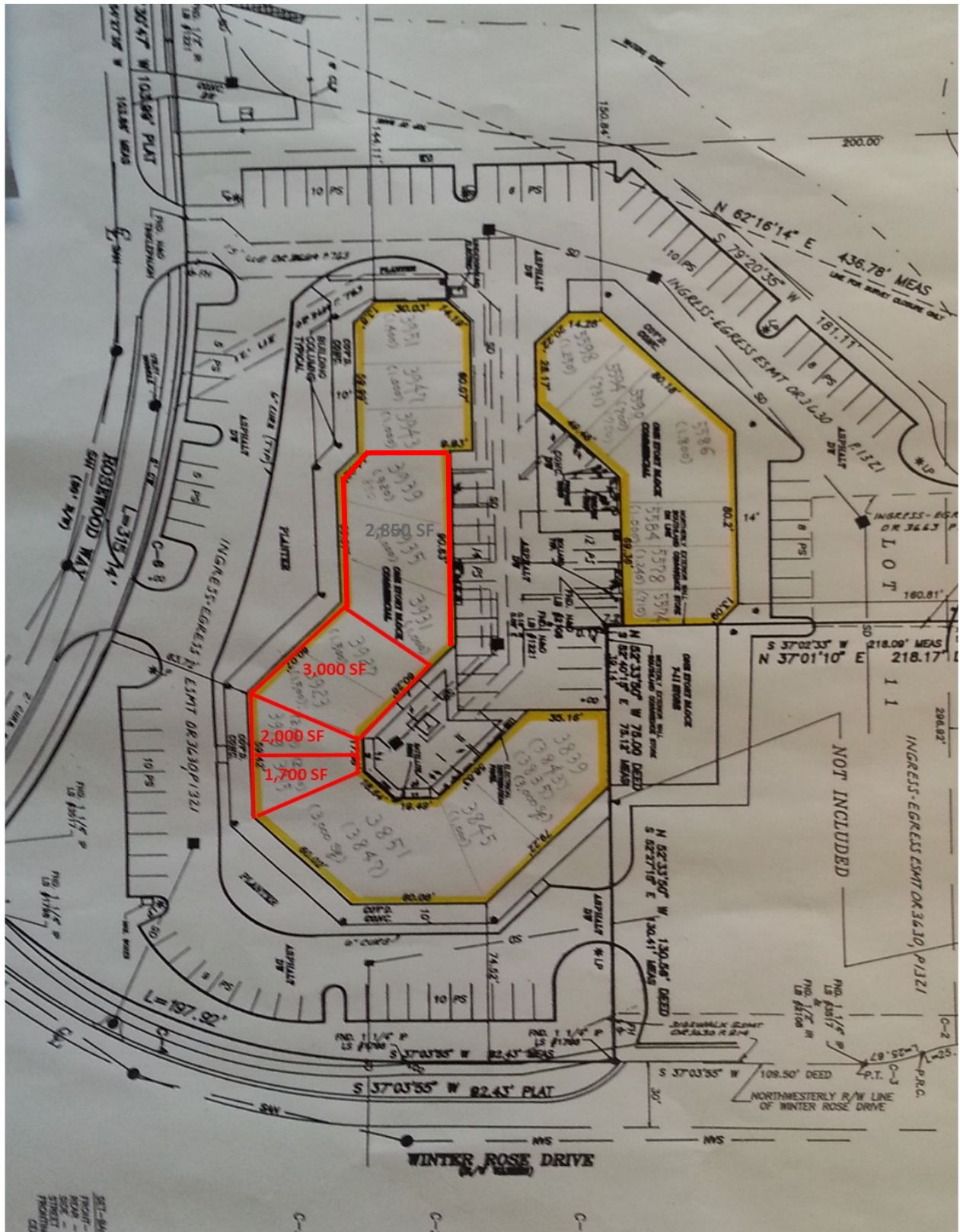


Southeastern Realty Group
933 Lee Road, Suite 400, Orlando, Florida 32810
407-629-5595 phone, 407-645-2035 fax
Visit our website at www.southeasternrealty.com

The information contained herein is from sources deemed reliable, but no warranty or representation is made as to the accuracy thereof and no liability may be imposed.

Site Plan:

Rosewood Plaza



Southeastern Realty Group
 933 Lee Road, Suite 400, Orlando, Florida 32810
 407-629-5595 phone, 407-645-2035 fax
 Visit our website at www.southeasternrealty.com

The information contained herein is from sources deemed reliable, but no warranty or representation is made as to the accuracy thereof and no liability may be imposed.