

Rosewood Plaza

Retail/ Office Space for Lease



5598 N. Orange Blossom Trail
Orlando, FL 32810

Property Details:

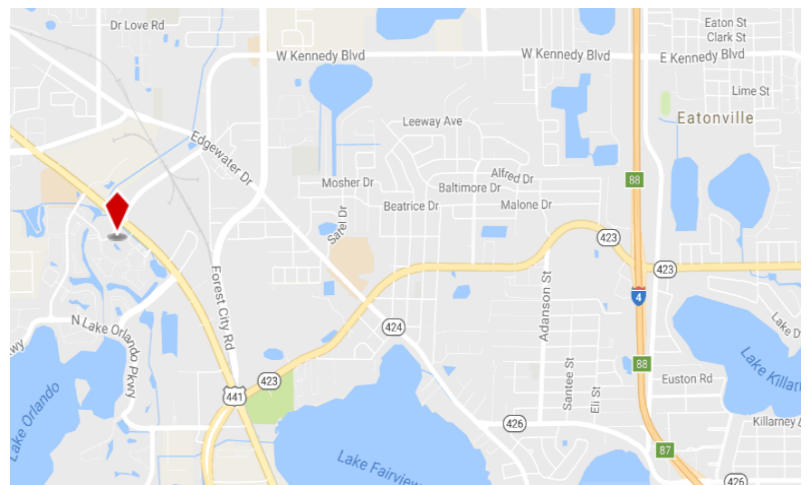
Total Space Available	2,132 SF
Rental Rate	Negotiable NNN
Min. Divisible	2,132 SF
Max. Contiguous	2,132 SF
Property Type	Retail
Property Sub-type	Office
Building Size	28,265 SF

Spaces:

Suite	Space Available	Min Divisible	Max Contiguous	Price	Available	Description
5598	2,132 SF	2,132 SF	2,132 SF	Upon Request	8/1/2025	Retail/Office

Location Description:

- Single story building
- Quick Access to I-4 and downtown
- Pylon signage available
- 24 hour traffic count: 30,500 vehicles
- Ample and convenient parking
- Restaurants and shopping nearby
- AC-1/W Zoning



Commercial Sales & Leasing | Property Management | Project Development | Acquisitions & Dispositions | Construction Services

Southeastern Realty Group, Inc. - 933 Lee Road Suite 400 - Orlando, FL 32810 - t: 407-629-5595 - f: 407-645-2035

The information contained herein is from sources deemed reliable, but no warranty or representation is made as to the accuracy thereof and no liability may be imposed.

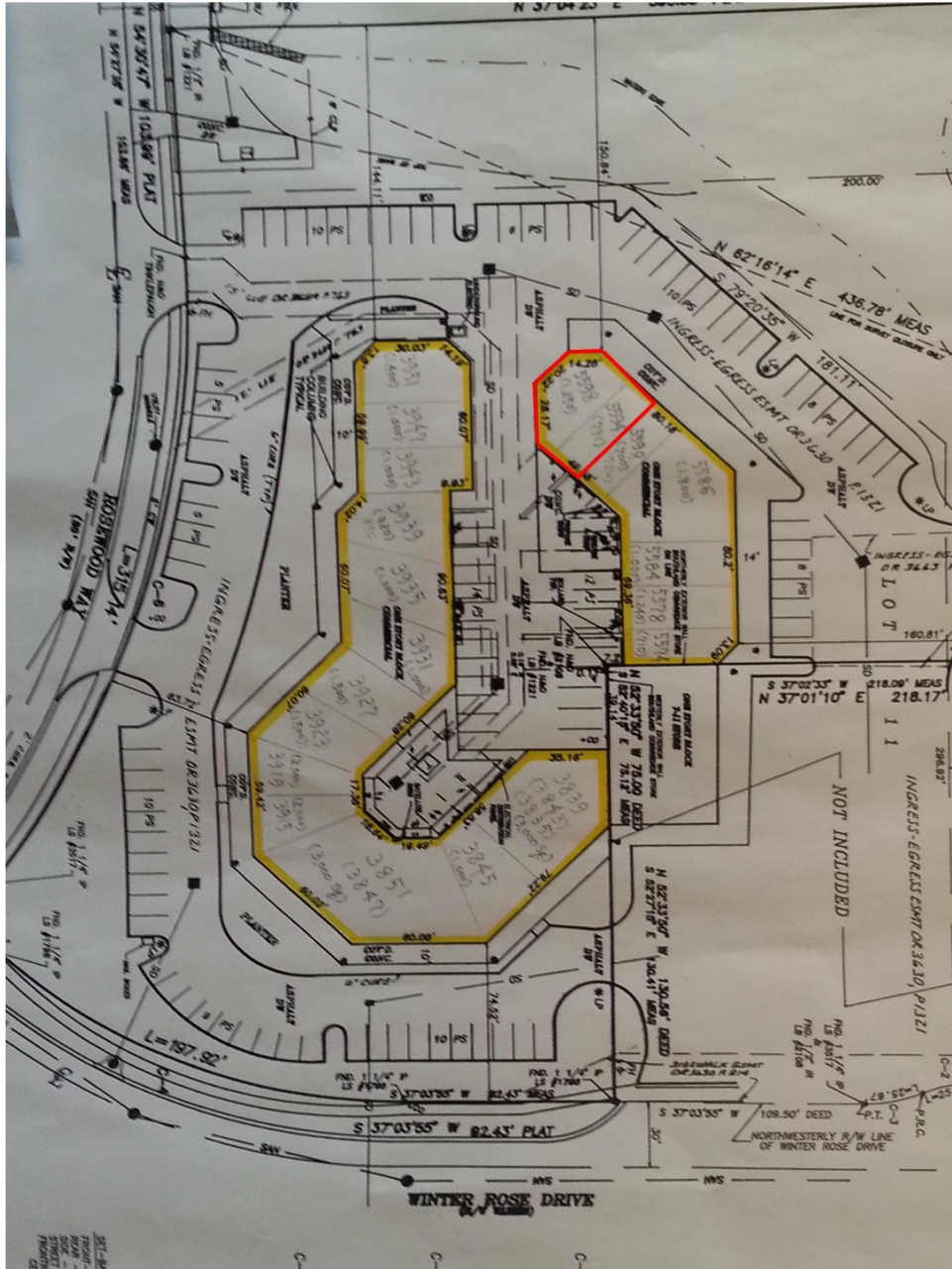
Site Plan:

Rosewood Plaza

5598 N. Orange Blossom Trail

Orlando, FL 32810

2,132 SF



Southeastern Realty Group
933 Lee Road, Suite 400, Orlando, Florida 32810
407-629-5595 phone, 407-645-2035 fax
Visit our website at www.southeasternrealty.com

The information contained herein is from sources deemed reliable, but no warranty or representation is made as to the accuracy thereof and no liability may be imposed.