

Park Center

Industrial Office/ Warehouse Space for Lease



**Parkway Commerce Blvd.,
Orlando, Florida 32808**

Property Details:

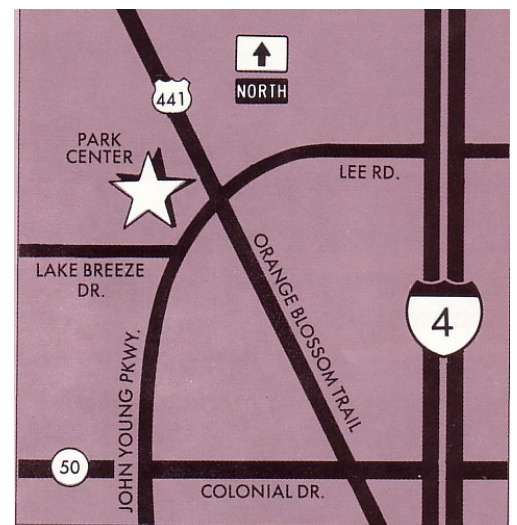
Total Space Available	21,600 SF
Min. Divisible	1,600 SF
Max. Contiguous	18,400 SF
Property Type	Industrial
Property Sub-type	Flex Space
Building Size	124,800 SF
Zoning Description	I-P/W

Spaces:

Suite/ Bldg	Space Available	Min Divisible	Max Contiguous	Date Available	Rate/Lease Type
4501	18,400 SF	18,400 SF	18,400 SF	Now	Negotiable/ MG
4714	1,600 SF	1,600 SF	1,600 SF	Now	\$9-\$10/SF/ MG

Location Description:

- Office/ Warehouse/ Distribution/ Manufacturing
- Serviced by Tri-County Bus Line
- Ground level service doors
- Centrally located, convenient access to interstate and major highways

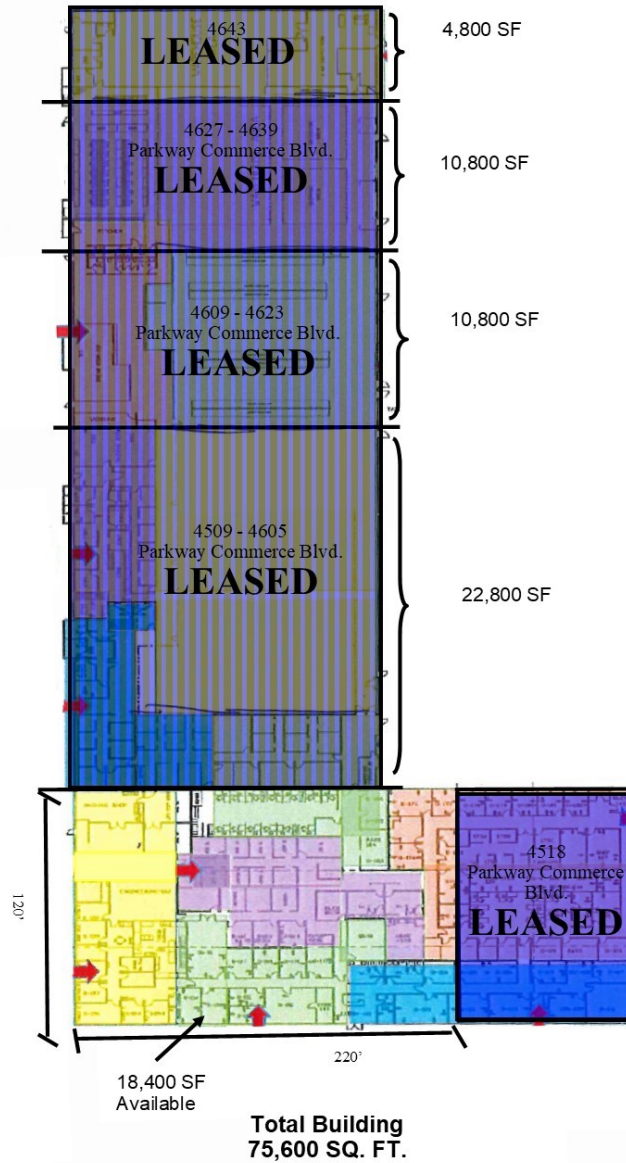


Commercial Sales & Leasing | Property Management | Project Development | Acquisitions & Dispositions | Construction Services

Southeastern Realty Group, Inc. - 933 Lee Road Suite 400 - Orlando, FL 32810 - t: 407-629-5595 - f: 407-645-2035

Floorplans:

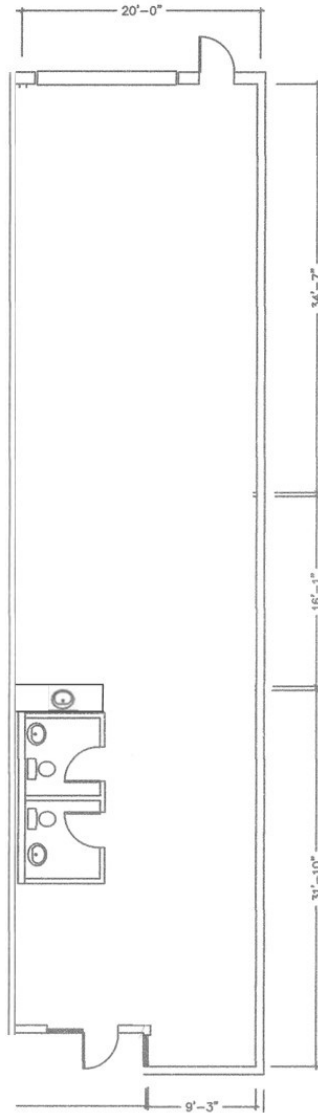
Park Center 606 Building 4501- 4643 Parkway Commerce Blvd, Orlando, FL 32808



Southeastern Realty Group
933 Lee Road, Suite 400, Orlando, Florida 32810
407-629-5595 phone, 407-645-2035 fax
Visit our website at www.southeasternrealty.com

Floorplans:

4714 Parkway Commerce Blvd.



Southeastern Realty Group
933 Lee Road, Suite 400, Orlando, Florida 32810
407-629-5595 phone, 407-645-2035 fax
Visit our website at www.southeasternrealty.com

The information contained herein is from sources deemed reliable, but no warranty or representation is made as to the accuracy thereof and no liability may be imposed.