

The Greene on Douglas

Office Space for Lease



1110 Douglas Avenue,
Altamonte Springs, Florida 32714

Property Details:

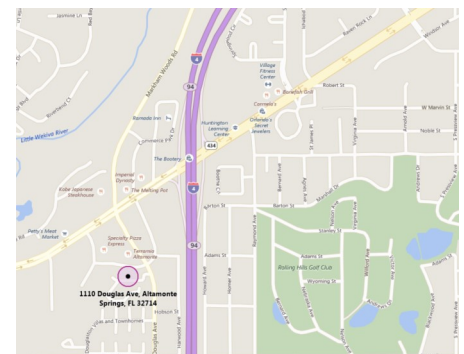
Total Space Available	3,347 RSF
Rental Rate	TBD
Min. Divisible	944 RSF
Max. Contiguous	2,403 RSF
Property Type	Office
Zoned	MOC-1
Building Class	B
Year Built	1986
Lot Size	4.72 AC

Spaces:

Suite	Space Available	Min Divisible	Max Contiguous	Price	Date Available	Description
2000	2,403 RSF	2,403 RSF	2,403 RSF	Negotiable	Now	See floorplan
3020	944 RSF	944 RSF	944 RSF	Negotiable	Now	See floorplan

Location Description:

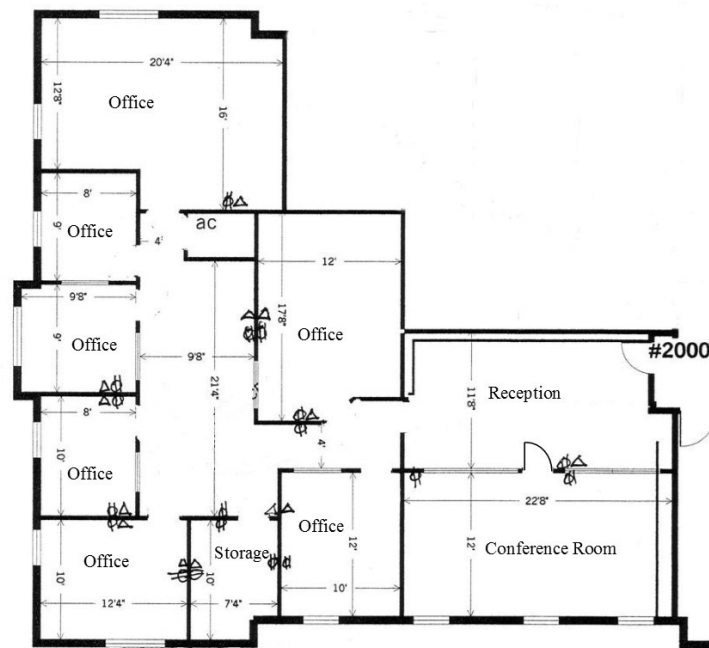
- Beautiful 3-story brick building
- Tiled lobby
- Exterior staircase with patio entrance
- Ample parking
- Convenient access to Highway 434, Interstate 4, and Highway 436



Commercial Sales & Leasing | Property Management | Project Development | Acquisitions & Dispositions | Construction Services

Southeastern Realty Group, Inc. - 933 Lee Road Suite 400 - Orlando, FL 32810 - t: 407-629-5595 - f: 407-645-2035

Suite 2000 - Floor Plan:



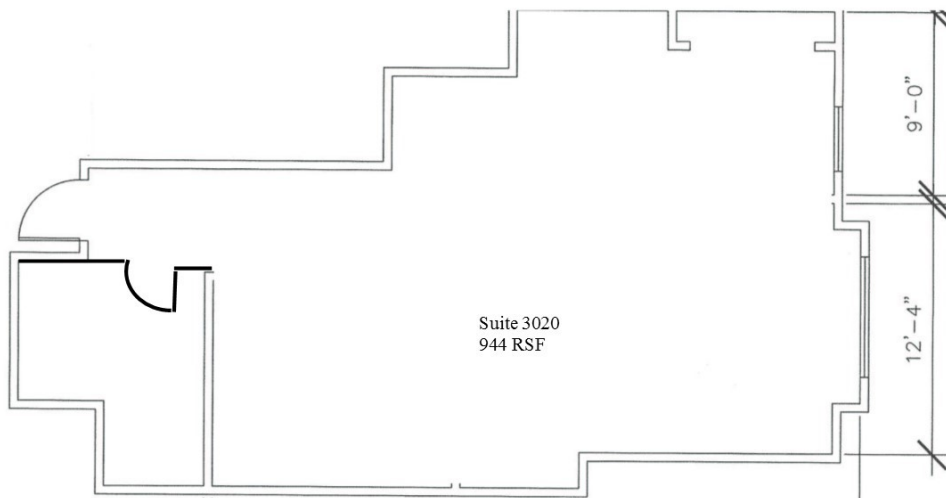
**The Green on Douglas
1110 Douglas Avenue
Suite 2000 - 2,403 RSF**

Southeastern Realty Group
933 Lee Road, Suite 400, Orlando, Florida 32810
407-629-5595 phone, 407-645-2035 fax
Visit our website at www.southeasternrealty.com

The information contained herein is from sources deemed reliable, but no warranty or representation is made as to the accuracy thereof and no liability may be imposed.

Suite 3020 - Floor Plan:

The Green on Douglas
1110 Douglas Avenue
Altamonte Springs, Florida 32714



Southeastern Realty Group
933 Lee Road, Suite 400, Orlando, Florida 32810
407-629-5595 phone, 407-645-2035 fax
Visit our website at www.southeasternrealty.com

The information contained herein is from sources deemed reliable, but no warranty or representation is made as to the accuracy thereof and no liability may be imposed.