

Brick Court Property

Office Space Available



5971 Brick Court,
Winter Park, Florida 32792

Property Details:

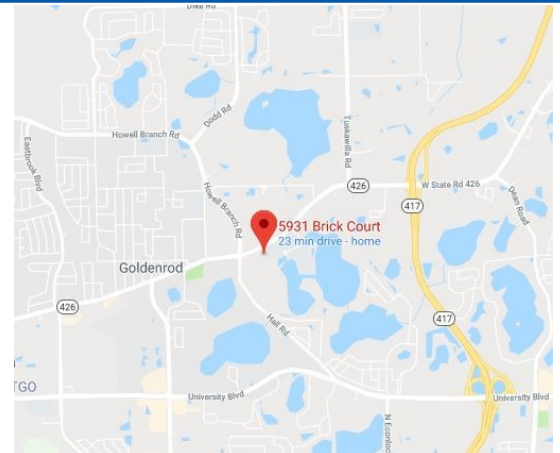
Total Space Available	5,360 RSF
Rental Rate	TBD
Min. Divisible	5,360 RSF
Max. Contiguous	5,360 RSF
Property Type	Office
Property Sub-type	Office Building
Zoned	PD

Spaces:

Bldg./ Suite	Space Available	Price	Lease Type	Date Available	Description
5971 / 1st Floor	5,360 RSF	TBD	Mod. Gross	1/1/2022	See Floor Plan

Location Description:

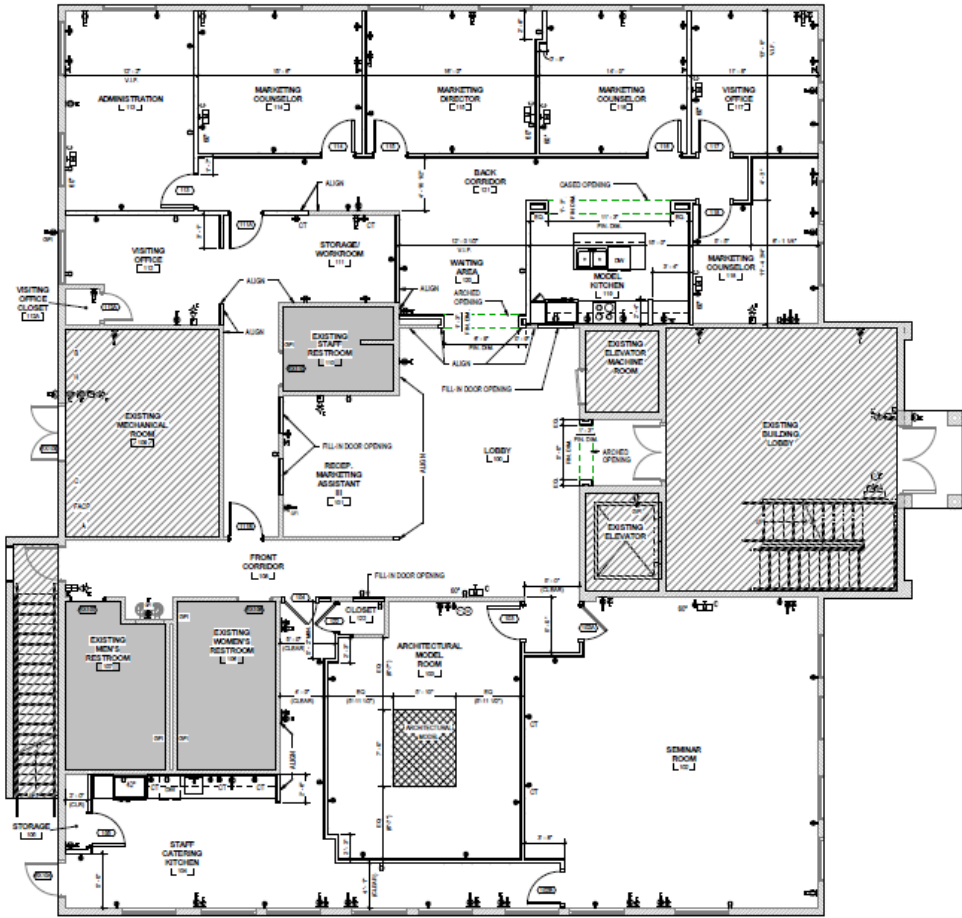
- Winter Park Address
- Excellent parking
- Pylon signage available
- Located just off Aloma Avenue in quiet office park
- 5931 Building offers use of breakroom and conference room at no extra charge



Commercial Sales & Leasing | Property Management | Project Development | Acquisitions & Dispositions | Construction Services

Southeastern Realty Group, Inc. - 933 Lee Road Suite 400 - Orlando, FL 32810 - t: 407-629-5595 - f: 407-645-2035

Building 5971 - 1st Floor



5,360 RSF

Southeastern Realty Group
 933 Lee Road, Suite 400, Orlando, Florida 32810
 407-629-5595 phone, 407-645-2035 fax
 Visit our website at www.southeasternrealty.com

The information contained herein is from sources deemed reliable, but no warranty or representation is made as to the accuracy thereof and no liability may be imposed.