

Blackberry Creek Plaza

Retail and Office Space for Lease

315, 317 & 319 Commerce
Center Dr. Saint Cloud, FL



Property Details:

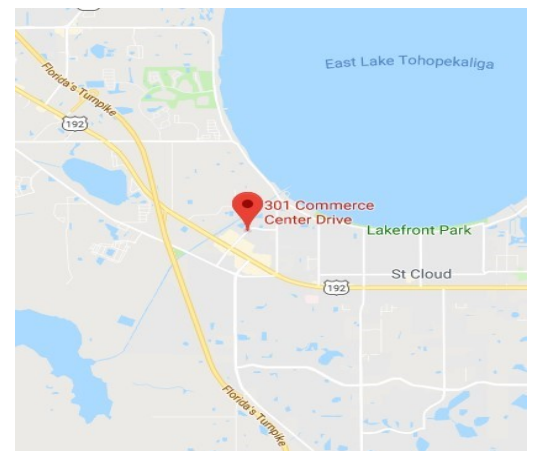
Total Space Available	4,140 SF
Rental Rate	TBD
Min. Divisible	1,380 SF
Max. Contiguous	2,760 SF
Property Type	Retail/ Office
Zoning	HB (Highway Business)

Spaces:

Suite	Space Available	Min Divisible	Max Contiguous	Price	Date Available	Description
315	1,380 SF	1,380 SF	1,380 SF	TBD	1/1/2021	Retail/Office
317	1,380 SF	1,380 SF	2,760 SF	TBD	10/1/2020	Medical Office
319	1,380 SF	1,380 SF	2,760 SF	TBD	10/1/2020	Medical Office

Features:

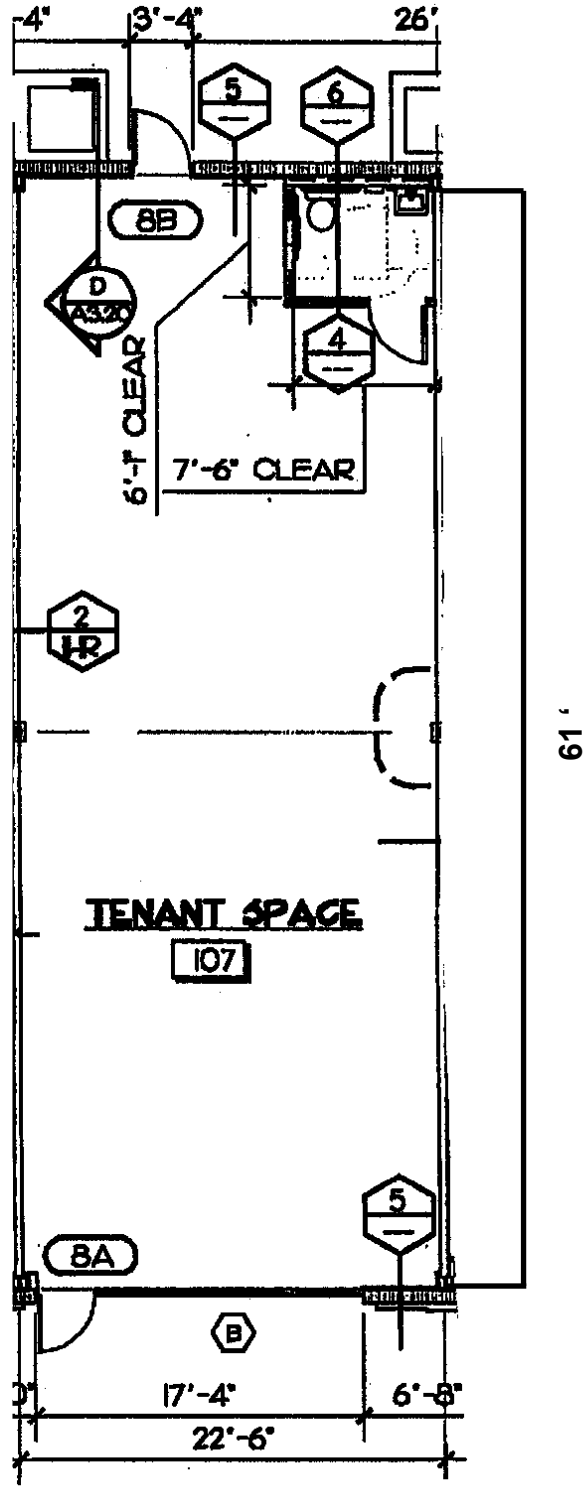
Prior Lab Corp office (Suites 317 & 319)
Ideal location in high growth area of St. Cloud
Property adjacent to Walmart Superstore, Home Depot,
St. Cloud Post Office
Easy access to Hwy. 192 and Florida Turnpike
Individually metered
Some units have 12' roll up doors



Commercial Sales & Leasing | Property Management | Project Development | Acquisitions & Dispositions | Construction Services

Southeastern Realty Group, Inc. - 933 Lee Road Suite 400 - Orlando, FL 32810 - t: 407-629-5595 - f: 407-645-2035

Floorplan - Suite 315:

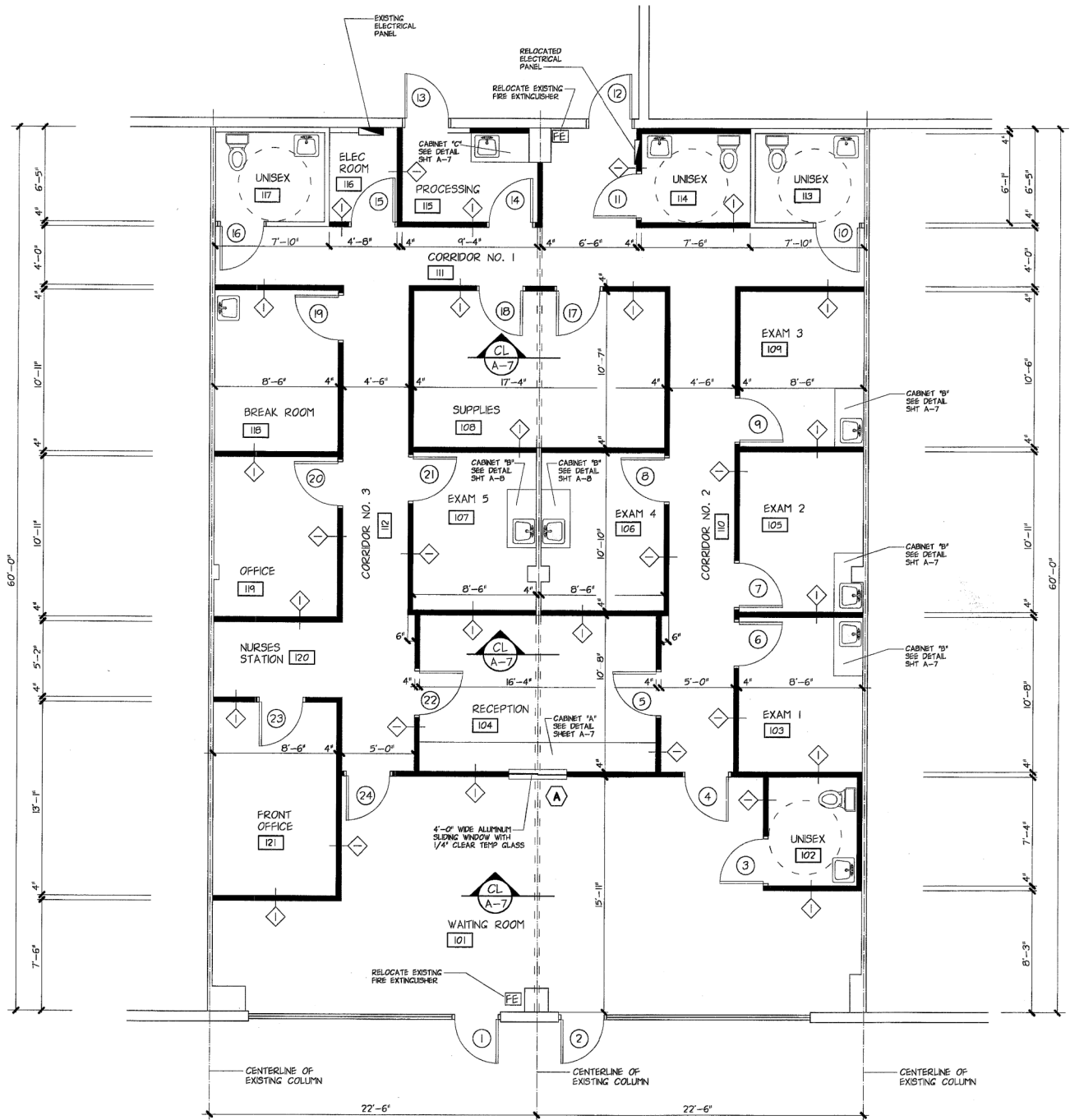


1,380 SF

Commercial Sales & Leasing | Property Management | Project Development | Acquisitions & Dispositions | Construction Services
Southeastern Realty Group, Inc. - 933 Lee Road Suite 400 - Orlando, FL 32810 - t: 407-629-5595 - f: 407-645-2035

The information contained herein is from sources deemed reliable, but no warranty or representation is made as to the accuracy thereof and no liability may be imposed.

Floorplan - Suites 317 & 319:



Note: Space can be split.

Commercial Sales & Leasing | Property Management | Project Development | Acquisitions & Dispositions | Construction Services
 Southeastern Realty Group, Inc. - 933 Lee Road Suite 400 - Orlando, FL 32810 - t: 407-629-5595 - f: 407-645-2035

The information contained herein is from sources deemed reliable, but no warranty or representation is made as to the accuracy thereof and no liability may be imposed.