

Blackberry Creek Plaza

Medical and Office Space for Lease

317 & 319 Commerce Center Dr.
Saint Cloud, FL 34769



Property Details:

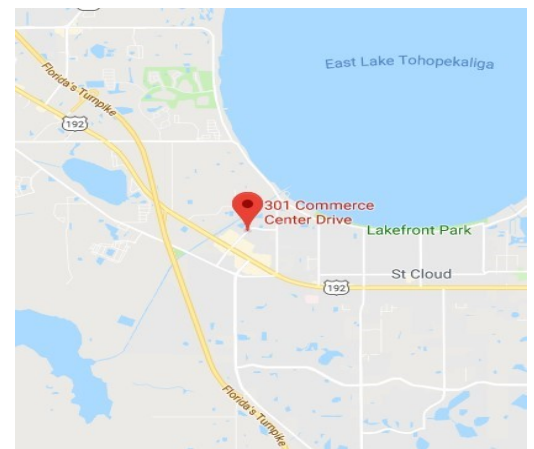
| | |
|-----------------------|--------------------------|
| Total Space Available | 2,760 SF |
| Rental Rate | TBD |
| Min. Divisible | 2,760 SF |
| Max. Contiguous | 2,760 SF |
| Property Type | Medical/Office |
| Zoning | HB (Highway Business) |

Spaces:

| Suite | Space Available | Min Divisible | Max Contiguous | Price | Date Available | Description |
|-----------|-----------------|---------------|----------------|-------|----------------|----------------|
| 317 & 319 | 2,760 SF | 2,760 SF | 2,760 SF | TBD | 12/1/2023 | Medical/Office |

Features:

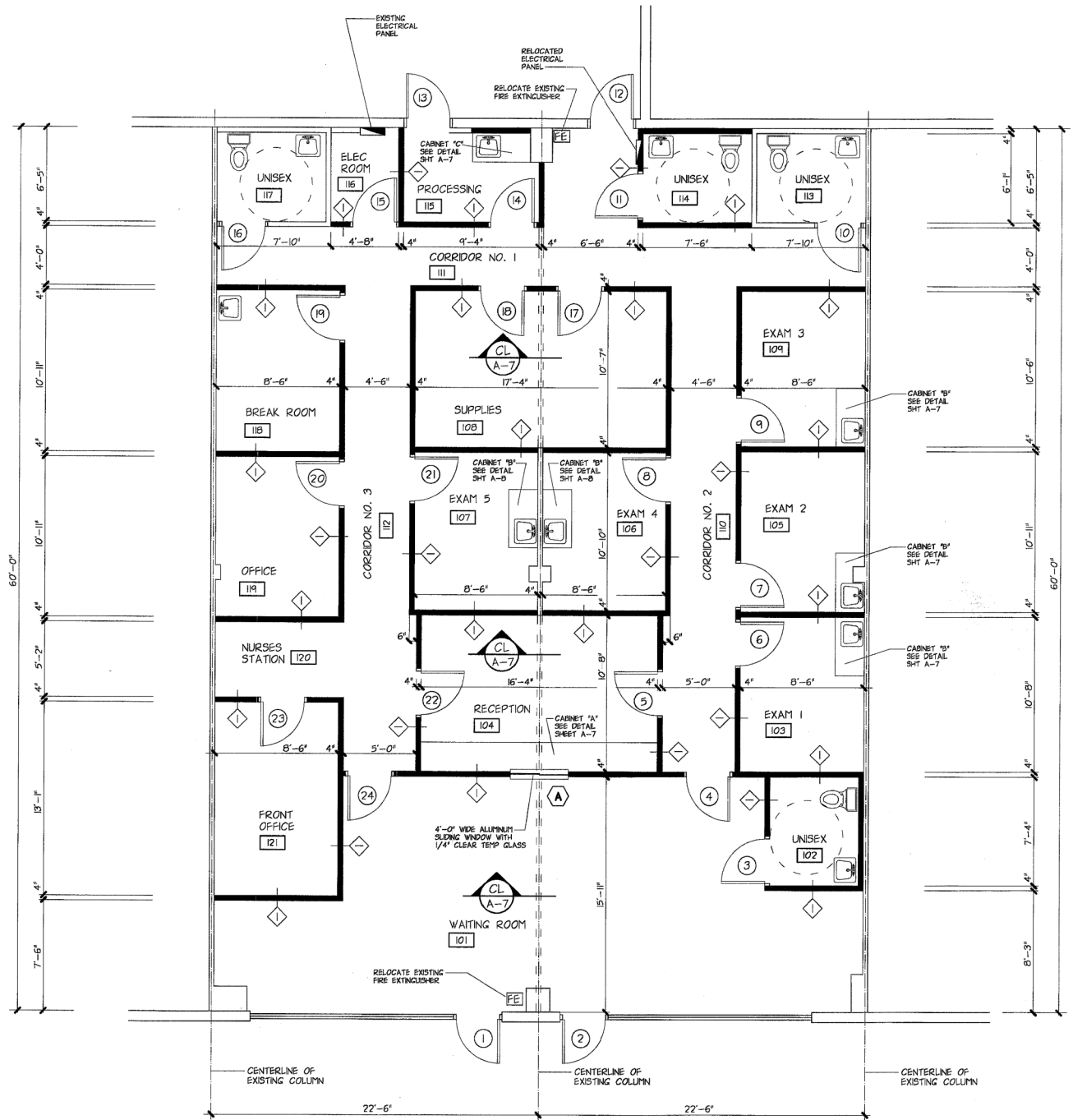
- Second generation medical space
- Can be converted to office
- Ideal location in high growth area of St. Cloud
- Easy access to Hwy. 192 and Florida Turnpike
- Individually metered



Commercial Sales & Leasing | Property Management | Project Development | Acquisitions & Dispositions | Construction Services

Southeastern Realty Group, Inc. - 933 Lee Road Suite 400 - Orlando, FL 32810 - t: 407-629-5595 - f: 407-645-2035

Floorplan:



**317 & 319 Commerce Center Drive
St. Cloud, FL 34769
2,760 SF**

Southeastern Realty Group, Inc. - 933 Lee Road Suite 400 - Orlando, FL 32810 - t: 407-629-5595 - f: 407-645-2035

The information contained herein is from sources deemed reliable, but no warranty or representation is made as to the accuracy thereof and no liability may be imposed.