

Blackberry Creek Plaza

Retail and Office Space for Lease

311 & 315 Commerce Center Dr.
Saint Cloud, FL 34769



Property Details:

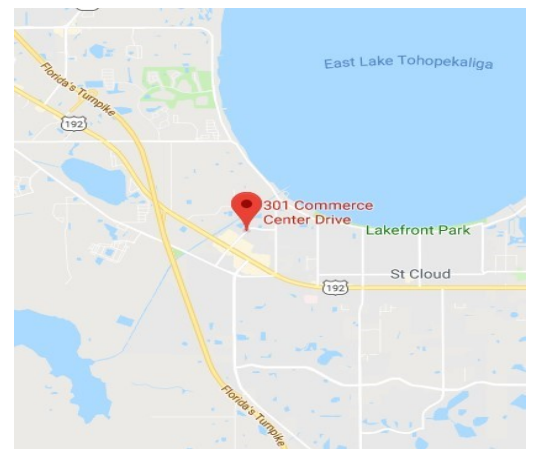
Total Space Available	2,760 SF
Rental Rate	TBD
Min. Divisible	1,380 SF
Max. Contiguous	1,380 SF
Property Type	Retail/ Office
Zoning	HB (Highway Business)

Spaces:

Suite	Space Available	Min Divisible	Max Contiguous	Price	Date Available	Description
311	1,380 SF	1,380 SF	1,380 SF	TBD	3/1/2021	Retail/Office
315	1,380 SF	1,380 SF	1,380 SF	TBD	1/1/2021	Retail/Office

Features:

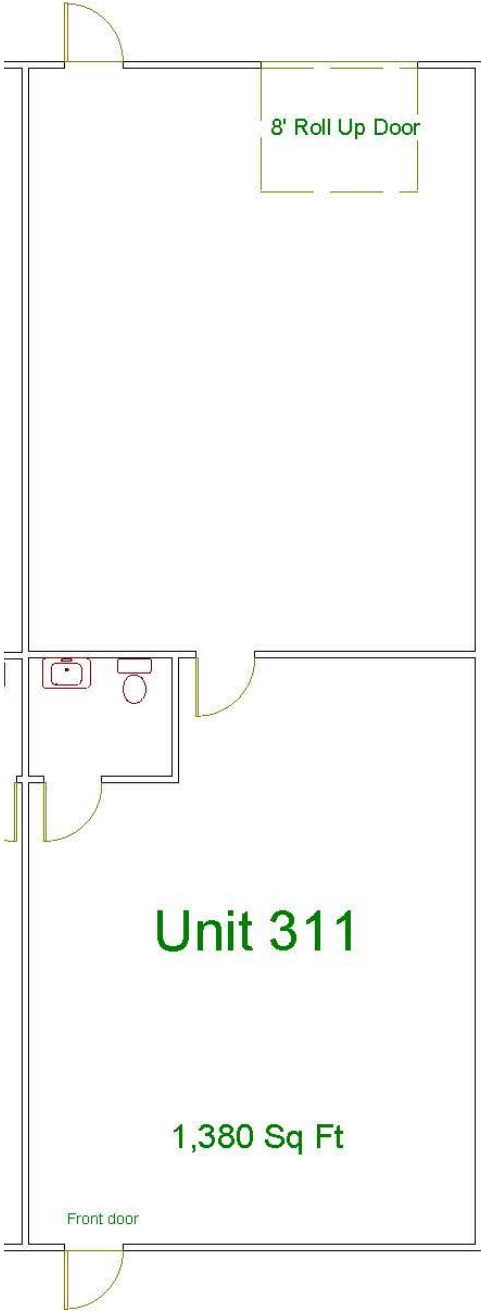
Ideal location in high growth area of St. Cloud
Property near to Walmart Superstore & Home Depot
Easy access to Hwy. 192 and Florida Turnpike
Individually metered
Some units have 12' roll up doors



Commercial Sales & Leasing | Property Management | Project Development | Acquisitions & Dispositions | Construction Services

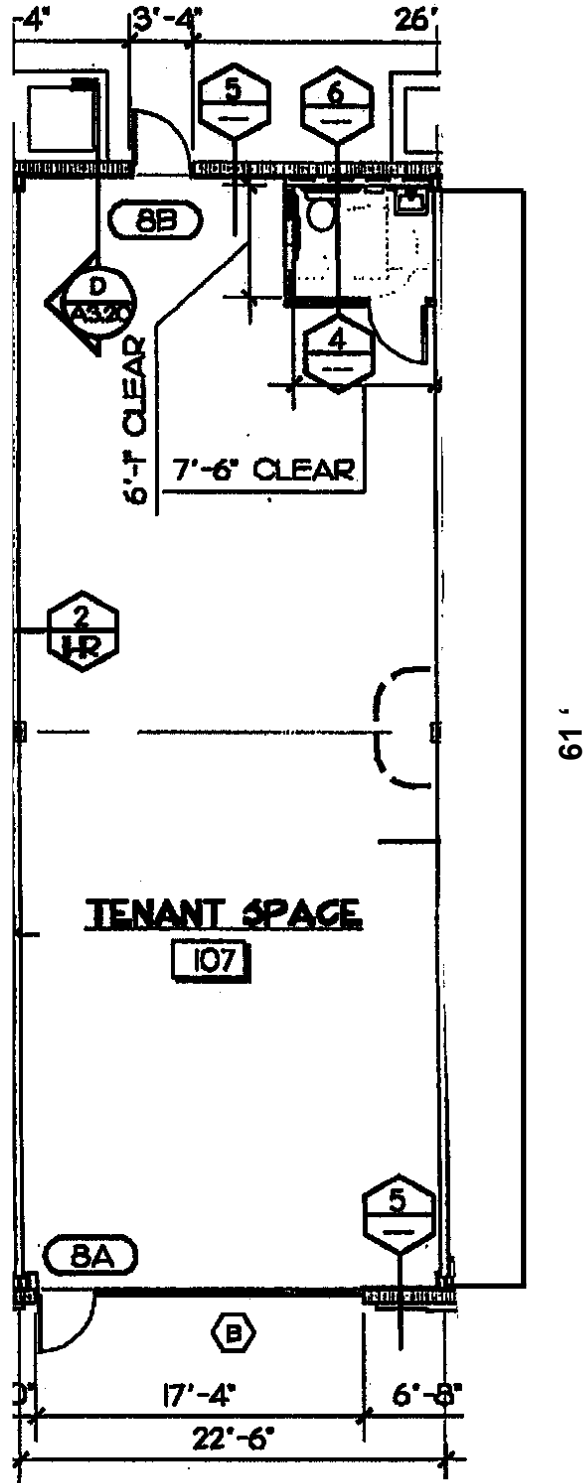
Southeastern Realty Group, Inc. - 933 Lee Road Suite 400 - Orlando, FL 32810 - t: 407-629-5595 - f: 407-645-2035

Floorplan - Suite 311:



**311 Commerce Center Drive
St. Cloud, FL 34769
1,380 SF**

Floorplan - Suite 315:



315 Commerce Center Drive
St. Cloud, FL 34769
1,380 SF

Commercial Sales & Leasing | Property Management | Project Development | Acquisitions & Dispositions | Construction Services
Southeastern Realty Group, Inc. - 933 Lee Road Suite 400 - Orlando, FL 32810 - t: 407-629-5595 - f: 407-645-2035

The information contained herein is from sources deemed reliable, but no warranty or representation is made as to the accuracy thereof and no liability may be imposed.