

501 Wymore Road

Office Space for Lease

501 Wymore Road,
Winter Park, Florida 32789



Property Details:

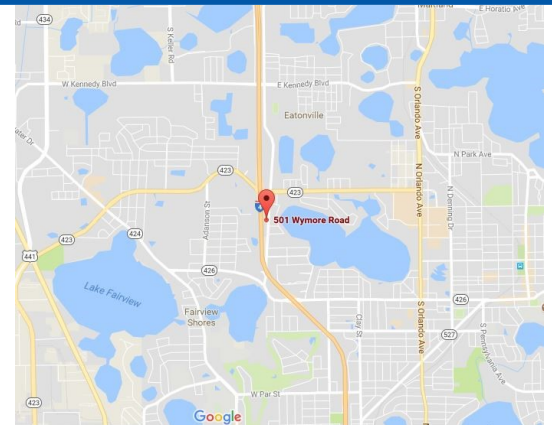
Total Space Available	2,523 SF
Rental Rate	Negotiable
Min. Divisible	1,250 SF
Max. Contiguous	1,273 SF
Property Type	Office
Building Class	C
Year Built	1981 4.72
	AC

Spaces:

Suite	Space Available	Max Contiguous	Price	Date Available	Description
120	1,273 SF	1,273 SF	Negotiable	Now	Office
130	1,250 SF	1,250 SF	Negotiable	Now	Office

Location Description:

- Two story, full service building
- Excellent location with I-4 visibility
- I-4 signage available
- Quick access to I-4, Lee Road, Fairbanks Ave., and US Highway 17-92
- Professionally landscaped

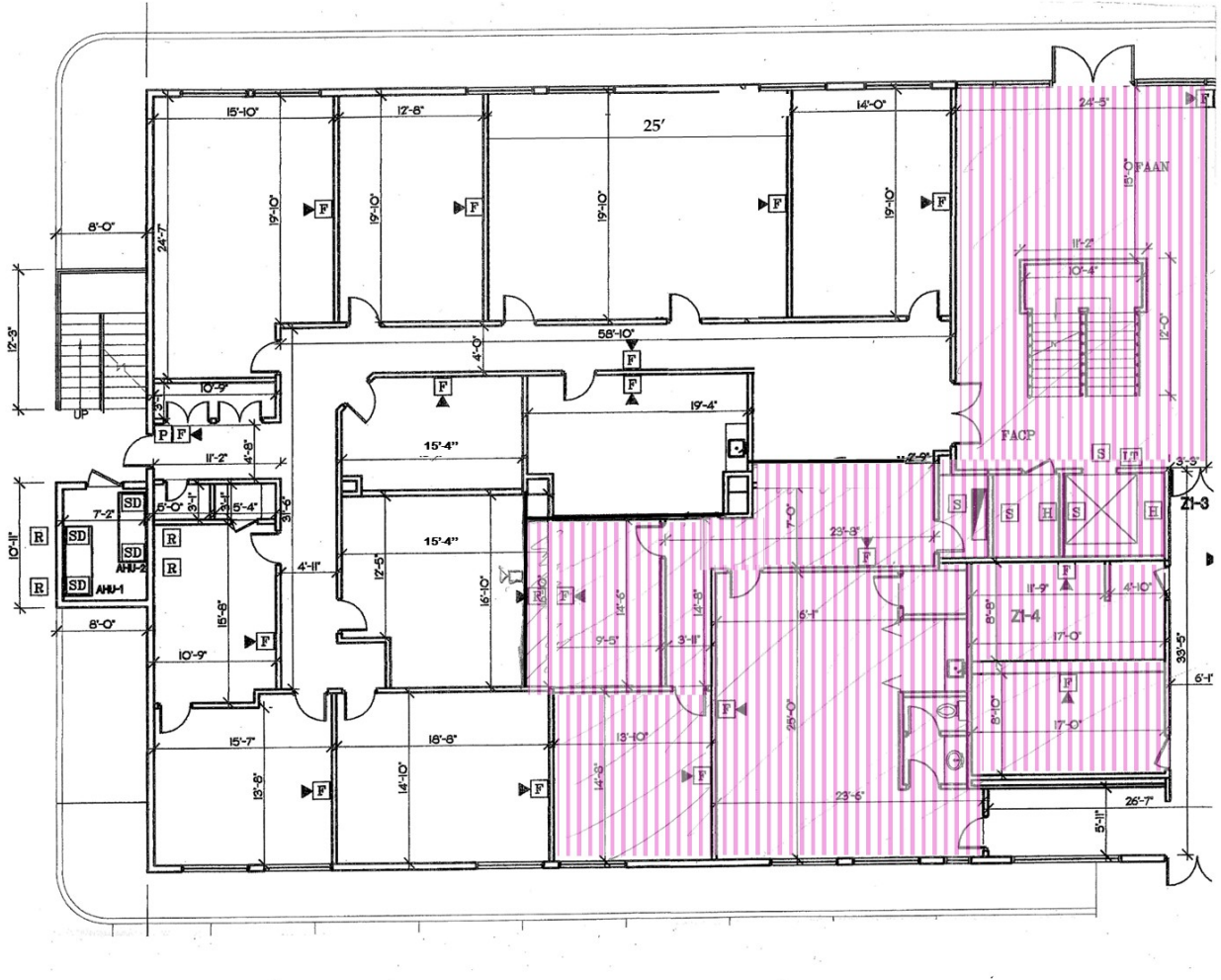


Commercial Sales & Leasing | Property Management | Project Development | Acquisitions & Dispositions | Construction Services
Southeastern Realty Group, Inc. - 933 Lee Road Suite 400 - Orlando, FL 32810 - t: 407-629-5595 - f: 407-645-2035

Floor Plan:

1st Floor space available

Suite 120 4,325 SF



Southeastern Realty Group
 933 Lee Road, Suite 400, Orlando, Florida 32810
 407-629-5595 phone, 407-645-2035 fax
 Visit our website at www.southeasternrealty.com

The information contained herein is from sources deemed reliable, but no warranty or representation is made as to the accuracy thereof and no liability may be imposed.